

Product datasheet for **TA380870**

RFPL3 Rabbit Polyclonal Antibody

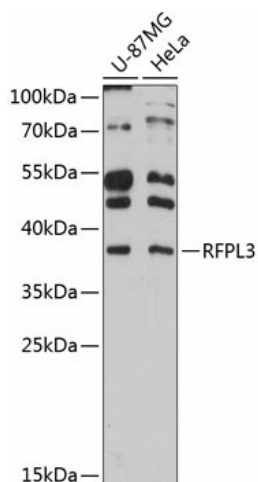
Product data:

Product Type:	Primary Antibodies
Applications:	WB
Recommended Dilution:	WB,1:500 - 1:2000
Reactivity:	Human
Modifications:	Unmodified
Host:	Rabbit
Isotype:	IgG
Clonality:	Polyclonal
Immunogen:	Recombinant fusion protein containing a sequence corresponding to amino acids 1-288 of human RFPL3 (NP_006595.1).
Formulation:	Buffer: PBS with 0.02% sodium azide,50% glycerol,pH7.3.
Concentration:	lot specific
Purification:	Affinity purification
Conjugation:	Unconjugated
Storage:	Store at -20°C. Avoid freeze / thaw cycles.
Stability:	Shelf life: one year from despatch.
Predicted Protein Size:	32kDa/35kDa
Gene Name:	ret finger protein like 3
Database Link:	Entrez Gene 10738 Human O75679
Background:	(Microbial infection Stimulates the activity of Human Immunodeficiency Virus 1/HIV-1 pre-integration complex.
Synonyms:	OTTHUMP00000165867



[View online »](#)

Product images:



Western blot analysis of extracts of various cell lines, using RFPL3 antibody (TA380870) at 1:3000 dilution. | Secondary antibody: HRP Goat Anti-Rabbit IgG (H+L) at 1:10000 dilution. | Lysates/proteins: 25ug per lane. | Blocking buffer: 3% nonfat dry milk in TBST. | Detection: ECL Enhanced Kit. | Exposure time: 90s.