

Product datasheet for **TA380865S**

RFC5 Rabbit Polyclonal Antibody

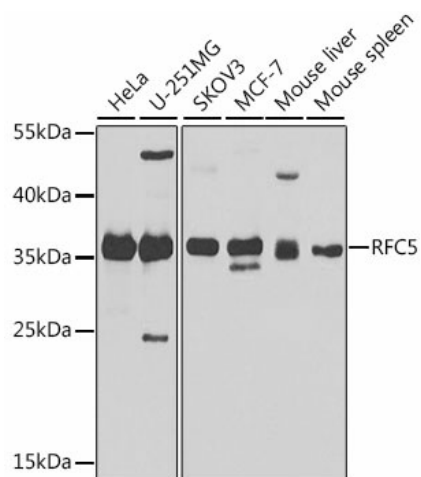
Product data:

Product Type:	Primary Antibodies
Applications:	ELISA, WB
Recommended Dilution:	WB, 1:500 - 1:2000 ELISA, Recommended starting concentration is 1 µg/mL. Please optimize the concentration based on your specific assay requirements.
Reactivity:	Human, Mouse, Rat
Modifications:	Unmodified
Host:	Rabbit
Isotype:	IgG
Clonality:	Polyclonal
Formulation:	Buffer: PBS with 0.02% sodium azide, 50% glycerol, pH 7.3.
Concentration:	lot specific
Purification:	Affinity purification
Conjugation:	Unconjugated
Storage:	Store at -20°C. Avoid freeze / thaw cycles.
Stability:	Shelf life: one year from despatch.
Predicted Protein Size:	38kDa
Gene Name:	replication factor C subunit 5
Database Link:	Entrez Gene 5985 Human P40937
Background:	This gene encodes the smallest subunit of the replication factor C complex, which consists of five distinct subunits (140, 40, 38, 37, and 36 kDa) and is required for DNA replication. This subunit interacts with the C-terminal region of proliferating cell nuclear antigen and is required to open and load proliferating cell nuclear antigen onto DNA during S phase. It is a member of the AAA+ (ATPases associated with various cellular activities) ATPase family and forms a core complex with the 38 and 40 kDa subunits that possesses DNA-dependent ATPase activity. A related pseudogene has been identified on chromosome 9. Alternative splicing results in multiple transcript variants.


[View online »](#)

Synonyms: MGC1155; OTTHUMP00000209892; RFC36

Product images:



Western blot analysis of various lysates using RFC5 Rabbit pAb ([TA380865]) at 1:1000 dilution. Secondary antibody: HRP-conjugated Goat anti-Rabbit IgG (H+L) (AS014) at 1:10000 dilution. Lysates/proteins: 25µg per lane. Blocking buffer: 3% nonfat dry milk in TBST. Detection: ECL Basic Kit (RM00020). Exposure time: 30s.