

Product datasheet for **TA380858**

RELM beta (RETNLB) Rabbit Polyclonal Antibody

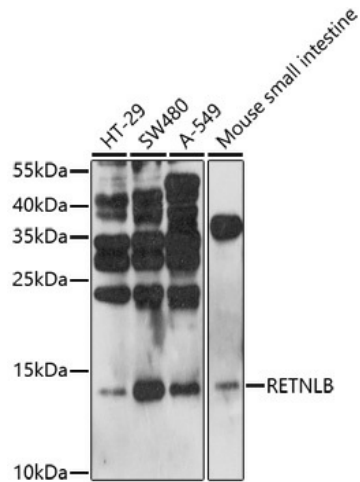
Product data:

Product Type:	Primary Antibodies
Applications:	WB
Recommended Dilution:	WB,1:500 - 1:2000
Reactivity:	Human, Mouse
Host:	Rabbit
Isotype:	IgG
Clonality:	Polyclonal
Immunogen:	Recombinant fusion protein containing a sequence corresponding to amino acids 1-111 of human RETNLB (NP_115968.1).
Formulation:	Buffer: PBS with 0.02% sodium azide,50% glycerol,pH7.3.
Concentration:	lot specific
Purification:	Affinity purification
Conjugation:	Unconjugated
Storage:	Store at -20°C. Avoid freeze / thaw cycles.
Stability:	Shelf life: one year from despatch.
Gene Name:	resistin like beta
Database Link:	Entrez Gene 84666 Human Q9BQ08
Background:	Probable hormone.
Synonyms:	CCRG; FIZZ1; FIZZ2; HXCP2; RELM-beta; RELMb; RELMbeta; RETNL2; XCP2



[View online »](#)

Product images:



Western blot analysis of extracts of various cell lines, using RETNLB antibody (TA380858) at 1:1000 dilution. | Secondary antibody: HRP Goat Anti-Rabbit IgG (H+L) at 1:10000 dilution. | Lysates/proteins: 25ug per lane. | Blocking buffer: 3% nonfat dry milk in TBST. | Detection: ECL Basic Kit . | Exposure time: 90s.