

Product datasheet for **TA380853S**

AP4 (REPIN1) Rabbit Polyclonal Antibody

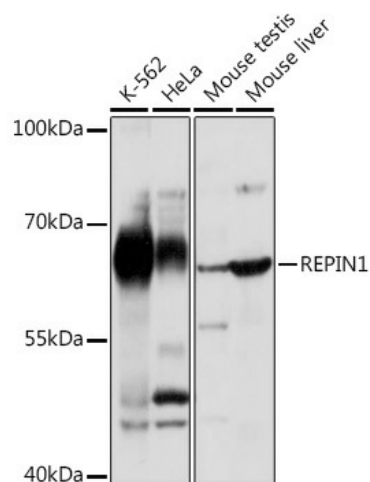
Product data:

Product Type:	Primary Antibodies
Applications:	ELISA, WB
Recommended Dilution:	WB, 1:500 - 1:2000 ELISA, Recommended starting concentration is 1 µg/mL. Please optimize the concentration based on your specific assay requirements.
Reactivity:	Human, Mouse
Host:	Rabbit
Isotype:	IgG
Clonality:	Polyclonal
Formulation:	Buffer: PBS with 0.02% sodium azide, 50% glycerol, pH 7.3.
Concentration:	lot specific
Purification:	Affinity purification
Conjugation:	Unconjugated
Storage:	Store at -20°C. Avoid freeze / thaw cycles.
Stability:	Shelf life: one year from despatch.
Predicted Protein Size:	64kDa
Gene Name:	replication initiator 1
Database Link:	Entrez Gene 29803 Human Q9BWE0
Background:	Enables RNA binding activity. Predicted to be involved in regulation of transcription by RNA polymerase II. Predicted to act upstream of or within positive regulation of glucose import and regulation of fatty acid transport. Located in nucleoplasm.
Synonyms:	AP4; H_DJ0584D14.12; RIP60; Zfp464; ZNF464



[View online »](#)

Product images:



Western blot analysis of various lysates using REPIN1 Rabbit pAb ([TA380853]) at 1:1000 dilution.

Secondary antibody: HRP-conjugated Goat anti-Rabbit IgG (H+L) (AS014) at 1:10000 dilution.

Lysates/proteins: 25µg per lane.

Blocking buffer: 3% nonfat dry milk in TBST.

Detection: ECL Basic Kit (RM00020).

Exposure time: 30s.