

Product datasheet for **TA380847**

NF-kB p65 (RELA) Rabbit Polyclonal Antibody

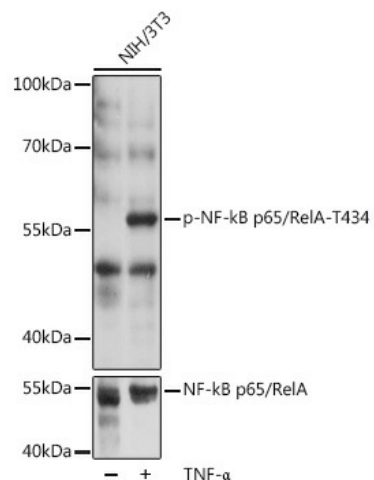
Product data:

Product Type:	Primary Antibodies
Applications:	WB
Recommended Dilution:	WB,1:500 - 1:2000
Reactivity:	Human, Mouse
Modifications:	Phospho T434
Host:	Rabbit
Isotype:	IgG
Clonality:	Polyclonal
Immunogen:	A phospho specific peptide corresponding to residues surrounding T434 of human RelA.
Formulation:	Buffer: PBS with 0.02% sodium azide,50% glycerol,pH7.3.
Concentration:	lot specific
Purification:	Affinity purification
Conjugation:	Unconjugated
Storage:	Store at -20°C. Avoid freeze / thaw cycles.
Stability:	Shelf life: one year from despatch.
Predicted Protein Size:	58kDa/59kDa/60kDa
Gene Name:	RELA proto-oncogene, NF-kB subunit
Database Link:	Entrez Gene 5970 Human Q04206
Background:	NF-kappa-B is a ubiquitous transcription factor involved in several biological processes. It is held in the cytoplasm in an inactive state by specific inhibitors. Upon degradation of the inhibitor, NF-kappa-B moves to the nucleus and activates transcription of specific genes. NF-kappa-B is composed of NFKB1 or NFKB2 bound to either REL, RELA, or RELB. The most abundant form of NF-kappa-B is NFKB1 complexed with the product of this gene, RELA. Four transcript variants encoding different isoforms have been found for this gene.
Synonyms:	MGC131774; NFKB3; p65



[View online »](#)

Product images:



Western blot analysis of extracts of NIH/3T3 cells, using Phospho-NF-kB p65/RelA-T434 pAb (TA380847) at 1:1000 dilution or RelA antibody (A16271). NIH/3T3 cells were treated by TNF- α (20 ng/mL) at 37°C for 30 minutes. | Secondary antibody: HRP Goat Anti-Rabbit IgG (H+L) at 1:10000 dilution. | Lysates/proteins: 25ug per lane. | Blocking buffer: 3% BSA. | Detection: ECL Basic Kit. | Exposure time: 5min.