

Product datasheet for **TA380840S**

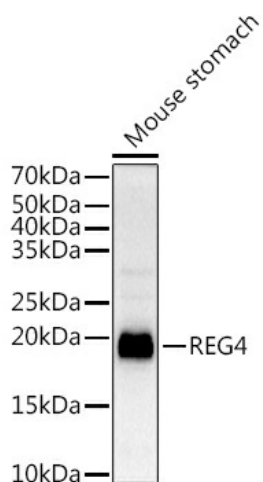
REG4 Rabbit Polyclonal Antibody

Product data:

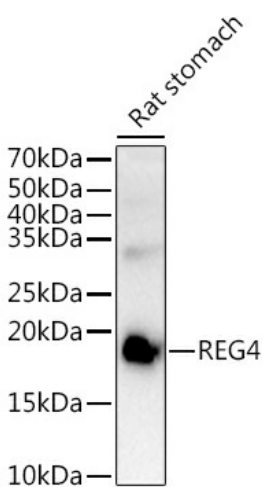
| | |
|-------------------------|--|
| Product Type: | Primary Antibodies |
| Applications: | ELISA, WB |
| Recommended Dilution: | WB, 1:500 - 1:1000 ELISA, Recommended starting concentration is 1 µg/mL. Please optimize the concentration based on your specific assay requirements. |
| Reactivity: | Mouse, Rat |
| Modifications: | Unmodified |
| Host: | Rabbit |
| Isotype: | IgG |
| Clonality: | Polyclonal |
| Formulation: | Buffer: PBS with 0.02% sodium azide, 50% glycerol, pH 7.3. |
| Concentration: | lot specific |
| Purification: | Affinity purification |
| Conjugation: | Unconjugated |
| Storage: | Store at -20°C. Avoid freeze / thaw cycles. |
| Stability: | Shelf life: one year from despatch. |
| Predicted Protein Size: | 18kDa |
| Gene Name: | regenerating family member 4 |
| Database Link: | Q9BYZ8 |
| Background: | Enables heparin binding activity and mannan binding activity. Predicted to act upstream of or within response to bacterium. Located in cytoplasm. |
| Synonyms: | GISP; OTTHUMP00000014031; REG-IV; RELP |

[View online »](#)

Product images:



Western blot analysis of lysates from Mouse stomach



Western blot analysis of lysates from Rat stomach