

Product datasheet for **TA380840**

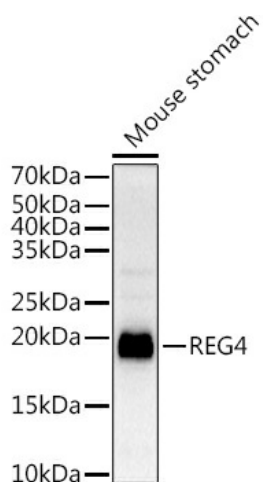
REG4 Rabbit Polyclonal Antibody

Product data:

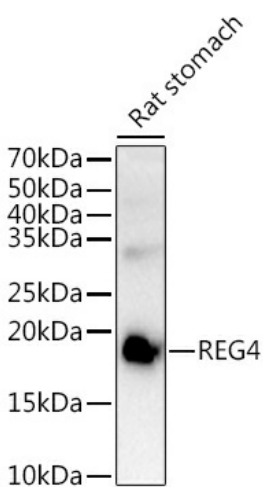
Product Type:	Primary Antibodies
Applications:	ELISA, WB
Recommended Dilution:	WB, 1:500 - 1:1000 ELISA, Recommended starting concentration is 1 µg/mL. Please optimize the concentration based on your specific assay requirements.
Reactivity:	Mouse, Rat
Modifications:	Unmodified
Host:	Rabbit
Isotype:	IgG
Clonality:	Polyclonal
Formulation:	Buffer: PBS with 0.01% thimerosal, 50% glycerol, pH7.3.
Concentration:	lot specific
Purification:	Affinity purification
Conjugation:	Unconjugated
Storage:	Store at -20°C. Avoid freeze / thaw cycles.
Stability:	Shelf life: one year from despatch.
Predicted Protein Size:	18kDa
Gene Name:	regenerating family member 4
Database Link:	Q9BYZ8
Background:	Enables heparin binding activity and mannan binding activity. Predicted to act upstream of or within response to bacterium. Located in cytoplasm.
Synonyms:	GISP; OTTHUMP00000014031; REG-IV; RELP

[View online »](#)

Product images:



Western blot analysis of lysates from Mouse stomach



Western blot analysis of lysates from Rat stomach