

Product datasheet for **TA380838S**

Reg3g Rabbit Polyclonal Antibody

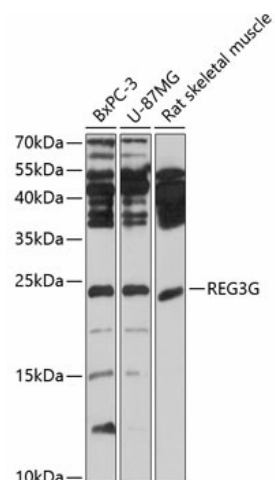
Product data:

Product Type:	Primary Antibodies
Applications:	ELISA, ICC/IF, WB
Recommended Dilution:	WB, 1:500 - 1:2000 IF/ICC, 1:10 - 1:100 ELISA, Recommended starting concentration is 1 µg/mL. Please optimize the concentration based on your specific assay requirements.
Reactivity:	Human, Mouse, Rat
Modifications:	Unmodified
Host:	Rabbit
Isotype:	IgG
Clonality:	Polyclonal
Formulation:	Buffer: PBS with 0.02% sodium azide, 50% glycerol, pH 7.3.
Concentration:	lot specific
Purification:	Affinity purification
Conjugation:	Unconjugated
Storage:	Store at -20°C. Avoid freeze / thaw cycles.
Stability:	Shelf life: one year from despatch.
Predicted Protein Size:	19kDa
Gene Name:	regenerating islet-derived 3 gamma
Database Link:	Entrez Gene 19695 Mouse O09049
Background:	This gene encodes a C-type lectin that demonstrates bactericidal activity. This gene is predominantly expressed in the distal small intestine where the encoded protein undergoes proteolytic processing by trypsin. Mice lacking the encoded protein exhibit altered mucus distribution, increased bacterial contact with the epithelium, and elevated inflammatory markers in the ileum, and low-grade inflammation.
Synonyms:	LPPM429; MGC118998; MGC118999; MGC119001; PAP1B; PAPIB; REG-III; UNQ429



[View online »](#)

Product images:



Western blot analysis of various lysates using REG3G Rabbit pAb ([TA380838]) at 1:1000 dilution.

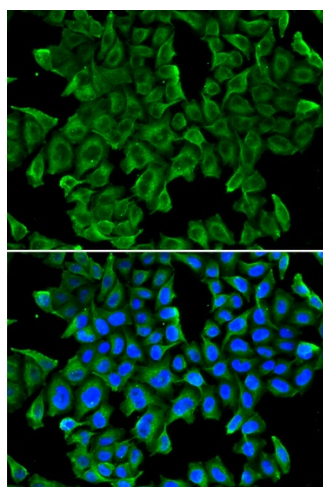
Secondary antibody: HRP-conjugated Goat anti-Rabbit IgG (H+L) (AS014) at 1:10000 dilution.

Lysates/proteins: 25µg per lane.

Blocking buffer: 3% nonfat dry milk in TBST.

Detection: ECL Basic Kit (RM00020).

Exposure time: 10s.



Immunofluorescence analysis of MCF-7 cells using REG3G Rabbit pAb ([TA380838]). Secondary antibody: Cy3-conjugated Goat anti-Rabbit IgG (H+L) (AS007) at 1:500 dilution. Blue: DAPI for nuclear staining.