

Product datasheet for **TA380835S**

REEP5 Rabbit Polyclonal Antibody

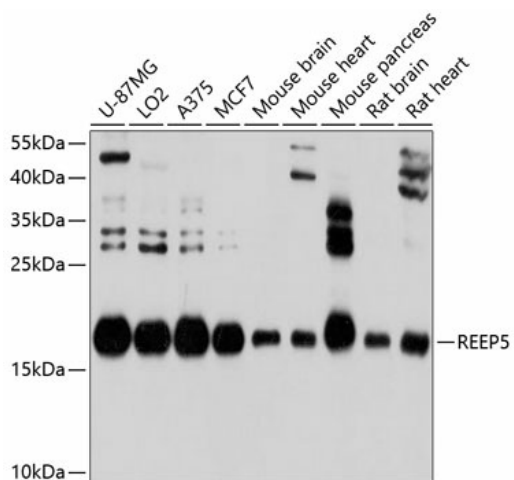
Product data:

Product Type:	Primary Antibodies
Applications:	WB
Recommended Dilution:	WB,1:500 - 1:2000
Reactivity:	Human, Mouse, Rat
Modifications:	Unmodified
Host:	Rabbit
Isotype:	IgG
Clonality:	Polyclonal
Immunogen:	Recombinant fusion protein containing a sequence corresponding to amino acids 120-189 of human REEP5 (NP_005660.4).
Formulation:	Buffer: PBS with 0.02% sodium azide,50% glycerol,pH7.3.
Concentration:	lot specific
Purification:	Affinity purification
Conjugation:	Unconjugated
Storage:	Store at -20°C. Avoid freeze / thaw cycles.
Stability:	Shelf life: one year from despatch.
Predicted Protein Size:	14kDa/21kDa
Gene Name:	receptor accessory protein 5
Database Link:	Entrez Gene 7905 Human Q00765
Background:	May promote functional cell surface expression of olfactory receptors.
Synonyms:	C5orf18; D5S346; DP1; MGC70440; TB2; YOP1



[View online »](#)

Product images:



Western blot analysis of extracts of various cell lines, using REEP5 antibody ([TA380835]) at 1:1000 dilution. | Secondary antibody: HRP Goat Anti-Rabbit IgG (H+L) at 1:10000 dilution. | Lysates/proteins: 25ug per lane. | Blocking buffer: 3% nonfat dry milk in TBST. | Detection: ECL Basic Kit . | Exposure time: 1s.