

Product datasheet for **TA380824S**

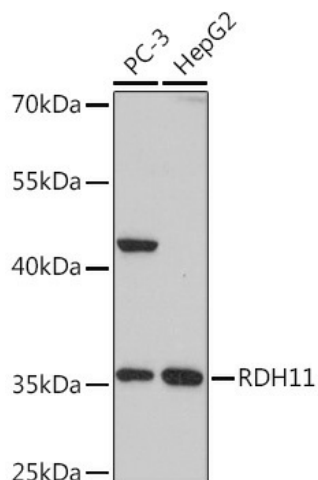
RDH11 Rabbit Polyclonal Antibody

Product data:

Product Type:	Primary Antibodies
Applications:	ELISA, WB
Recommended Dilution:	WB, 1:500 - 1:2000 ELISA, Recommended starting concentration is 1 µg/mL. Please optimize the concentration based on your specific assay requirements.
Reactivity:	Human, Rat
Host:	Rabbit
Isotype:	IgG
Clonality:	Polyclonal
Formulation:	Buffer: PBS with 0.02% sodium azide, 50% glycerol, pH 7.3.
Concentration:	lot specific
Purification:	Affinity purification
Conjugation:	Unconjugated
Storage:	Store at -20°C. Avoid freeze / thaw cycles.
Stability:	Shelf life: one year from despatch.
Predicted Protein Size:	35kDa
Gene Name:	retinol dehydrogenase 11 (all-trans/9-cis/11-cis)
Database Link:	Entrez Gene 51109 Human Q8TC12
Background:	Enables NADP-retinol dehydrogenase activity. Involved in cellular detoxification of aldehyde and retinoid metabolic process. Acts upstream of or within retinal metabolic process. Located in endoplasmic reticulum membrane.
Synonyms:	ARSDR1; CGI82; FLJ32633; HCBP12; MDT1; PSDR1; RaIR1; SCALD; SDR7C1



[View online »](#)

Product images:

Western blot analysis of various lysates using RDH11 Rabbit pAb ([TA380824]) at 1:1000 dilution.

Secondary antibody: HRP-conjugated Goat anti-Rabbit IgG (H+L) at 1:10000 dilution.

Lysates/proteins: 25µg per lane.

Blocking buffer: 3% nonfat dry milk in TBST.

Detection: ECL Basic Kit .

Exposure time: 30s.