

## Product datasheet for **TA380823**

### RDH10 Rabbit Polyclonal Antibody

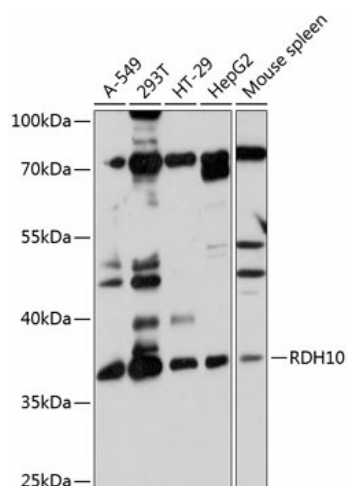
#### Product data:

Product Type:	Primary Antibodies
Applications:	WB
Recommended Dilution:	WB,1:500 - 1:2000
Reactivity:	Human, Mouse, Rat
Modifications:	Unmodified
Host:	Rabbit
Isotype:	IgG
Clonality:	Polyclonal
Immunogen:	Recombinant fusion protein containing a sequence corresponding to amino acids 27-293 of human RDH10 (NP_742034.1).
Formulation:	Buffer: PBS with 0.02% sodium azide,50% glycerol,pH7.3.
Concentration:	lot specific
Purification:	Affinity purification
Conjugation:	Unconjugated
Storage:	Store at -20°C. Avoid freeze / thaw cycles.
Stability:	Shelf life: one year from despatch.
Predicted Protein Size:	38kDa
Gene Name:	retinol dehydrogenase 10 (all-trans)
Database Link:	<a href="#">Entrez Gene 157506 Human Q8IZV5</a>
Background:	This gene encodes a retinol dehydrogenase, which converts all-trans-retinol to all-trans-retinal, with preference for NADP as a cofactor. Studies in mice suggest that this protein is essential for synthesis of embryonic retinoic acid and is required for limb, craniofacial, and organ development.
Synonyms:	SDR16C4



[View online »](#)

## Product images:



Western blot analysis of extracts of various cell lines, using RDH10 antibody (TA380823) at 1:1000 dilution. | Secondary antibody: HRP Goat Anti-Rabbit IgG (H+L) at 1:10000 dilution. | Lysates/proteins: 25ug per lane. | Blocking buffer: 3% nonfat dry milk in TBST. | Detection: ECL Basic Kit . | Exposure time: 10s.