

## Product datasheet for **TA380811S**

### RCC2 Rabbit Polyclonal Antibody

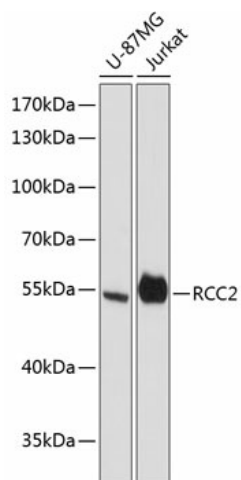
#### Product data:

Product Type:	Primary Antibodies
Applications:	WB
Recommended Dilution:	WB,1:500 - 1:2000
Reactivity:	Human
Modifications:	Unmodified
Host:	Rabbit
Isotype:	IgG
Clonality:	Polyclonal
Immunogen:	Recombinant fusion protein containing a sequence corresponding to amino acids 323-522 of human RCC2 (NP_001129676.1).
Formulation:	Buffer: PBS with 0.02% sodium azide,50% glycerol,pH7.3.
Concentration:	lot specific
Purification:	Affinity purification
Conjugation:	Unconjugated
Storage:	Store at -20°C. Avoid freeze / thaw cycles.
Stability:	Shelf life: one year from despatch.
Predicted Protein Size:	56kDa
Gene Name:	regulator of chromosome condensation 2
Database Link:	<a href="#">Entrez Gene 55920 Human Q9P258</a>
Background:	The protein encoded by this gene is a guanine exchange factor that is active on RalA, a small GTPase. The encoded protein and RalA are both essential for proper kinetochore-microtubule function in early mitosis. This protein has been shown to be a biomarker for colorectal cancer.
Synonyms:	DKFZp762N0610; KIAA1470; RCC1-like; TD-60; TD60



[View online »](#)

## Product images:



Western blot analysis of extracts of various cell lines, using RCC2 antibody ([TA380811]) at 1:3000 dilution. | Secondary antibody: HRP Goat Anti-Rabbit IgG (H+L) at 1:10000 dilution. | Lysates/proteins: 25ug per lane. | Blocking buffer: 3% nonfat dry milk in TBST. | Detection: ECL Basic Kit . | Exposure time: 90s.