

## Product datasheet for **TA380810**

### WBSCR16 (RCC1L) Rabbit Polyclonal Antibody

#### Product data:

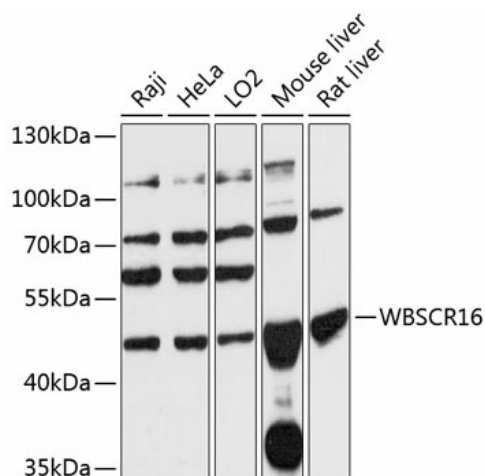
Product Type:	Primary Antibodies
Applications:	WB
Recommended Dilution:	WB,1:500 - 1:2000
Reactivity:	Human, Mouse, Rat
Modifications:	Unmodified
Host:	Rabbit
Isotype:	IgG
Clonality:	Polyclonal
Immunogen:	Recombinant fusion protein containing a sequence corresponding to amino acids 1-230 of human WBSCR16 (NP_110425.2).
Formulation:	Buffer: PBS with 0.02% sodium azide,50% glycerol,pH7.3.
Concentration:	lot specific
Purification:	Affinity purification
Conjugation:	Unconjugated
Storage:	Store at -20°C. Avoid freeze / thaw cycles.
Stability:	Shelf life: one year from despatch.
Predicted Protein Size:	38kDa/48kDa/49kDa
Gene Name:	RCC1 like
Database Link:	<a href="#">Entrez Gene 81554 Human Q96I51</a>

**Background:** This gene encodes a protein containing regulator of chromosome condensation 1-like repeats. The encoded protein may function as a guanine nucleotide exchange factor. This gene is located in a region of chromosome 7 that is deleted in Williams-Beuren syndrome, a multisystem developmental disorder. Alternative splicing results in multiple transcript variants.



[View online »](#)

## Product images:



Western blot analysis of extracts of various cell lines, using WBSCR16 antibody (TA380810) at 1:3000 dilution. | Secondary antibody: HRP Goat Anti-Rabbit IgG (H+L) at 1:10000 dilution. | Lysates/proteins: 25ug per lane. | Blocking buffer: 3% nonfat dry milk in TBST. | Detection: ECL Basic Kit . | Exposure time: 30s.