

## Product datasheet for **TA380809S**

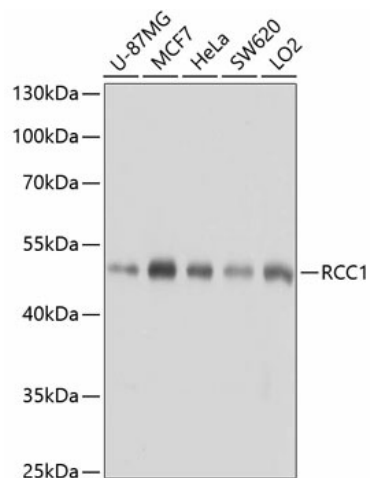
### RCC1 Rabbit Polyclonal Antibody

#### Product data:

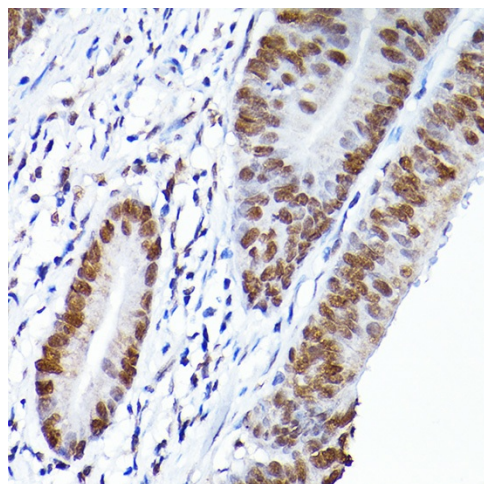
Product Type:	Primary Antibodies
Applications:	ELISA, ICC/IF, IHC, WB
Recommended Dilution:	WB, 1:1000 - 1:2000 IHC-P, 1:50 - 1:200 IF/ICC, 1:50 - 1:200 ELISA, Recommended starting concentration is 1 µg/mL. Please optimize the concentration based on your specific assay requirements.
Reactivity:	Human, Mouse, Rat
Modifications:	Unmodified
Host:	Rabbit
Isotype:	IgG
Clonality:	Polyclonal
Formulation:	Buffer: PBS with 0.02% sodium azide, 50% glycerol, pH 7.3.
Concentration:	lot specific
Purification:	Affinity purification
Conjugation:	Unconjugated
Storage:	Store at -20°C. Avoid freeze / thaw cycles.
Stability:	Shelf life: one year from despatch.
Predicted Protein Size:	45kDa
Gene Name:	regulator of chromosome condensation 1
Database Link:	<a href="#">Entrez Gene 1104 Human P18754</a>
Background:	Enables several functions, including guanyl-nucleotide exchange factor activity; nucleosomal DNA binding activity; and protein heterodimerization activity. Involved in several processes, including G1/S transition of mitotic cell cycle; regulation of mitotic nuclear division; and spindle organization. Located in chromatin; cytoplasm; and nucleus. Part of protein-containing complex.
Synonyms:	CHC1; HERC2; OTTHUMP00000003775; RCC1-I; SHEP1


[View online »](#)

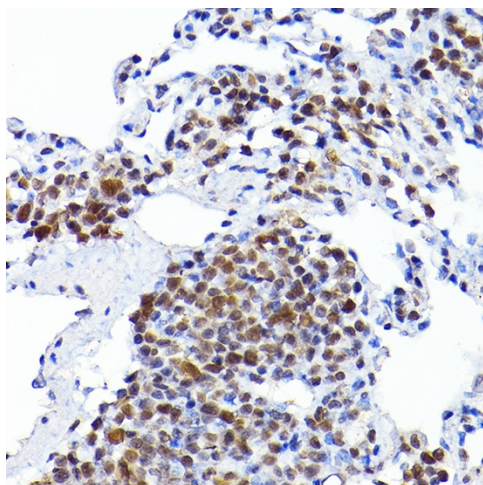
## Product images:



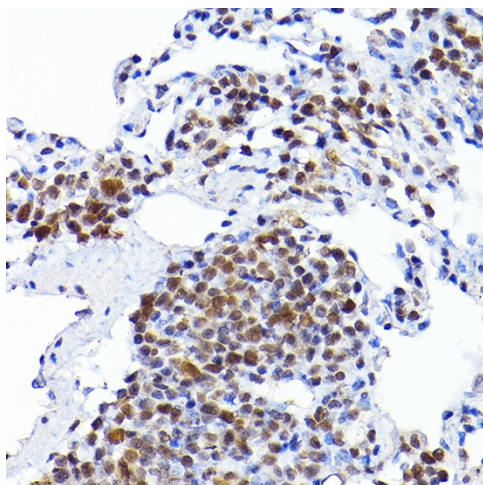
Western blot analysis of various lysates using RCC1 Rabbit pAb ([TA380809]) at 1:1000 dilution. Secondary antibody: HRP-conjugated Goat anti-Rabbit IgG (H+L) (AS014) at 1:10000 dilution. Lysates/proteins: 25µg per lane. Blocking buffer: 3% nonfat dry milk in TBST. Detection: ECL Basic Kit (RM00020). Exposure time: 5s.



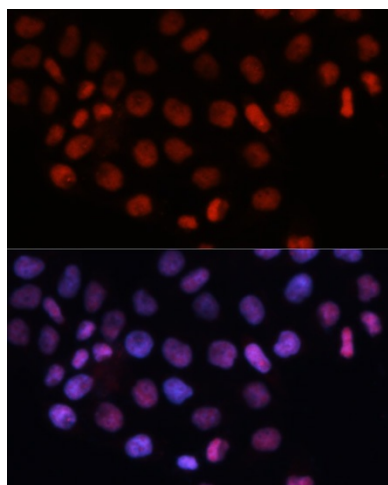
Immunohistochemistry analysis of paraffin-embedded Human breast cancer using RCC1 Rabbit pAb ([TA380809]) at dilution of 1:200 (40x lens). High pressure antigen retrieval performed with 0.01M Citrate Buffer (pH 6.0) prior to IHC staining.



Immunohistochemistry analysis of paraffin-embedded Human colon carcinoma using RCC1 Rabbit pAb ([TA380809]) at dilution of 1:200 (40x lens). High pressure antigen retrieval performed with 0.01M Citrate Bufferr (pH 6.0) prior to IHC staining.



Immunohistochemistry analysis of paraffin-embedded Rat lung using RCC1 Rabbit pAb ([TA380809]) at dilution of 1:200 (40x lens). High pressure antigen retrieval performed with 0.01M Citrate Bufferr (pH 6.0) prior to IHC staining.



Immunofluorescence analysis of HeLa cells using RCC1 Rabbit pAb ([TA380809]) at dilution of 1:100. Secondary antibody: Cy3-conjugated Goat anti-Rabbit IgG (H+L) (AS007) at 1:500 dilution. Blue: DAPI for nuclear staining.