

Product datasheet for **TA380806S**

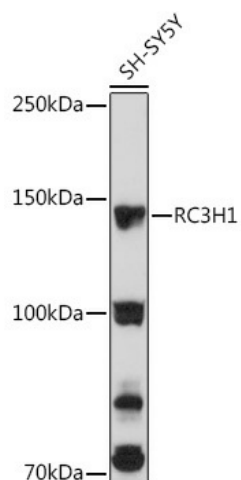
RC3H1 Rabbit Polyclonal Antibody

Product data:

Product Type:	Primary Antibodies
Applications:	ELISA, WB
Recommended Dilution:	WB, 1:200 - 1:2000 ELISA, Recommended starting concentration is 1 µg/mL. Please optimize the concentration based on your specific assay requirements.
Reactivity:	Human, Mouse, Rat
Modifications:	Unmodified
Host:	Rabbit
Isotype:	IgG
Clonality:	Polyclonal
Formulation:	Buffer: PBS with 0.02% sodium azide, 50% glycerol, pH 7.3.
Concentration:	lot specific
Purification:	Affinity purification
Conjugation:	Unconjugated
Storage:	Store at -20°C. Avoid freeze / thaw cycles.
Stability:	Shelf life: one year from despatch.
Predicted Protein Size:	126kDa
Gene Name:	ring finger and CCCH-type domains 1
Database Link:	Entrez Gene 149041 Human Q5TC82
Background:	This gene encodes a protein containing RING-type and C3H1-type zinc finger motifs. The encoded protein recognizes and binds to a constitutive decay element (CDE) in the 3' UTR of mRNAs, leading to mRNA deadenylation and degradation. Alternative splicing results in multiple transcript variants.
Synonyms:	KIAA2025; RNF198; ROQUIN; RP5-1198E17.5

[View online »](#)

Product images:



Western blot analysis of lysates from SH-SY5Y cells