

Product datasheet for **TA380799**

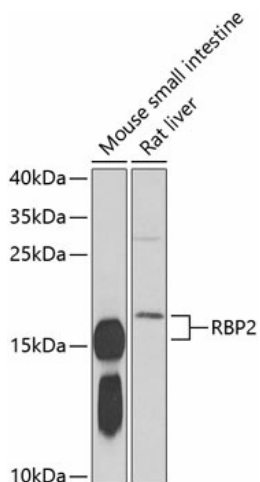
RBP2 Rabbit Polyclonal Antibody

Product data:

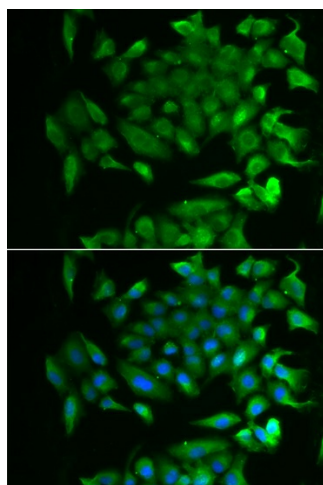
Product Type:	Primary Antibodies
Applications:	ICC/IF, WB
Recommended Dilution:	WB,1:500 - 1:2000 IF,1:50 - 1:100
Reactivity:	Human, Mouse, Rat
Modifications:	Unmodified
Host:	Rabbit
Isotype:	IgG
Clonality:	Polyclonal
Immunogen:	Recombinant fusion protein containing a sequence corresponding to amino acids 1-134 of human RBP2 (NP_004155.2).
Formulation:	Buffer: PBS with 0.02% sodium azide,50% glycerol,pH7.3.
Concentration:	lot specific
Purification:	Affinity purification
Conjugation:	Unconjugated
Storage:	Store at -20°C. Avoid freeze / thaw cycles.
Stability:	Shelf life: one year from despatch.
Predicted Protein Size:	15kDa
Gene Name:	retinol binding protein 2
Database Link:	Entrez Gene 5948 Human P50120
Background:	This gene encodes an abundant protein present in the small intestinal epithelium. It is thought to participate in the uptake and/or intracellular metabolism of vitamin A. Vitamin A is a fat-soluble vitamin necessary for growth, reproduction, differentiation of epithelial tissues, and vision. This protein may also modulate the supply of retinoic acid to the nuclei of endometrial cells during the menstrual cycle.
Synonyms:	C; CRABP-II; CRBP-II; CRBP2; CRBP2II; RBPC2



[View online »](#)

Product images:

Western blot analysis of extracts of various cell lines, using RBP2 antibody (TA380799) at 1:1000 dilution. | Secondary antibody: HRP Goat Anti-Rabbit IgG (H+L) at 1:10000 dilution. | Lysates/proteins: 25ug per lane. | Blocking buffer: 3% nonfat dry milk in TBST. | Detection: ECL Basic Kit. | Exposure time: 60s.



Immunofluorescence analysis of MCF-7 cells using RBP2 antibody (TA380799). Blue: DAPI for nuclear staining.