

## Product datasheet for **TA380797**

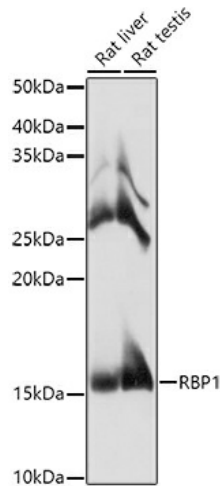
### **RBP1 Rabbit Polyclonal Antibody**

#### **Product data:**

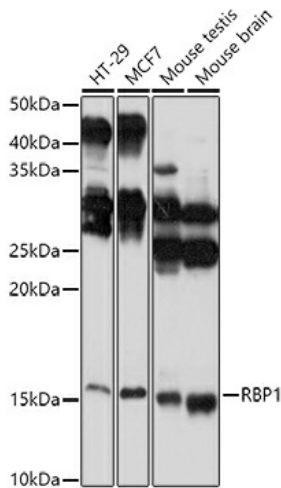
<b>Product Type:</b>	Primary Antibodies
<b>Applications:</b>	ICC/IF, WB
<b>Recommended Dilution:</b>	WB,1:500 - 1:1000 IF,1:50 - 1:200
<b>Reactivity:</b>	Human, Mouse, Rat
<b>Modifications:</b>	Unmodified
<b>Host:</b>	Rabbit
<b>Isotype:</b>	IgG
<b>Clonality:</b>	Polyclonal
<b>Immunogen:</b>	Recombinant fusion protein containing a sequence corresponding to amino acids 63-197 of human RBP1 (NP_002890.2).
<b>Formulation:</b>	Buffer: PBS with 0.02% sodium azide,50% glycerol,pH7.3.
<b>Concentration:</b>	lot specific
<b>Purification:</b>	Affinity purification
<b>Conjugation:</b>	Unconjugated
<b>Storage:</b>	Store at -20°C. Avoid freeze / thaw cycles.
<b>Stability:</b>	Shelf life: one year from despatch.
<b>Predicted Protein Size:</b>	15kDa/17kDa
<b>Gene Name:</b>	retinol binding protein 1
<b>Database Link:</b>	<a href="#">Entrez Gene 5947 Human P09455</a>
<b>Background:</b>	This gene encodes the carrier protein involved in the transport of retinol (vitamin A alcohol) from the liver storage site to peripheral tissue. Vitamin A is a fat-soluble vitamin necessary for growth, reproduction, differentiation of epithelial tissues, and vision. Multiple transcript variants encoding different isoforms have been found for this gene.
<b>Synonyms:</b>	C; CRABP-I; CRBP; CRBP-I; CRBP1; CRBPI; RBPC



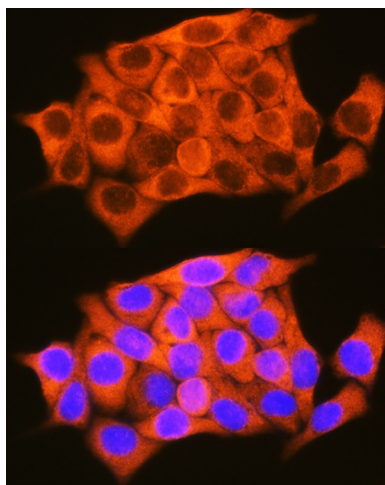
[View online »](#)

**Product images:**


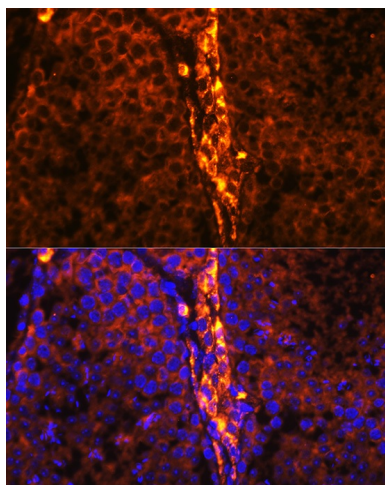
Western blot analysis of extracts of various cell lines, using RBP1 antibody (TA380797) at 1:1000 dilution. | Secondary antibody: HRP Goat Anti-Rabbit IgG (H+L) at 1:10000 dilution. | Lysates/proteins: 25ug per lane. | Blocking buffer: 3% nonfat dry milk in TBST. | Detection: ECL Basic Kit . | Exposure time: 3s.



Western blot analysis of extracts of various cell lines, using RBP1 antibody (TA380797) at 1:1000 dilution. | Secondary antibody: HRP Goat Anti-Rabbit IgG (H+L) at 1:10000 dilution. | Lysates/proteins: 25ug per lane. | Blocking buffer: 3% nonfat dry milk in TBST. | Detection: ECL Basic Kit . | Exposure time: 30s.



Immunofluorescence analysis of HeLa cells using RBP1 Rabbit pAb (TA380797) at dilution of 1:100 (40x lens). Blue: DAPI for nuclear staining.



Immunofluorescence analysis of mouse testis using RBP1 Rabbit pAb (TA380797) at dilution of 1:100 (40x lens). Blue: DAPI for nuclear staining.