

## Product datasheet for **TA380791S**

### RBMS1 Rabbit Polyclonal Antibody

#### Product data:

Product Type:	Primary Antibodies
Applications:	IHC, WB
Recommended Dilution:	WB,1:200 - 1:1000 IHC,1:20 - 1:100 IF,1:20 - 1:100
Reactivity:	Human
Modifications:	Unmodified
Host:	Rabbit
Isotype:	IgG
Clonality:	Polyclonal
Immunogen:	Recombinant fusion protein containing a sequence corresponding to amino acids 1-260 of human RBMS1 (NP_002888.1).
Formulation:	Buffer: PBS with 0.02% sodium azide,50% glycerol,pH7.3.
Concentration:	lot specific
Purification:	Affinity purification
Conjugation:	Unconjugated
Storage:	Store at -20°C. Avoid freeze / thaw cycles.
Stability:	Shelf life: one year from despatch.
Predicted Protein Size:	4kDa/44kDa
Gene Name:	RNA binding motif single stranded interacting protein 1
Database Link:	<a href="#">Entrez Gene 5937 Human P29558</a>



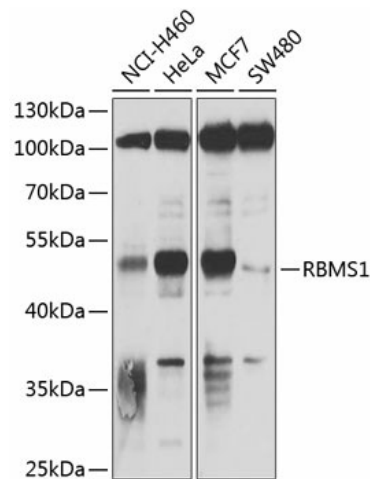
[View online »](#)

**Background:**

This gene encodes a member of a small family of proteins which bind single stranded DNA/RNA. These proteins are characterized by the presence of two sets of ribonucleoprotein consensus sequence (RNP-CS) that contain conserved motifs, RNP1 and RNP2, originally described in RNA binding proteins, and required for DNA binding. These proteins have been implicated in such diverse functions as DNA replication, gene transcription, cell cycle progression and apoptosis. Several transcript variants, resulting from alternative splicing and encoding different isoforms, have been described. A pseudogene for this locus is found on chromosome 12.

**Synonyms:**

C2orf12; DKFZp564H0764; HCC-4; MGC3331; MGC15146; MGC70597; MGC97258; MGC97270; MGC97282; MGC99543; MSSP; MSSP-1; MSSP-2; MSSP-3; MSSP1; SCR2; YC1

**Product images:**

Western blot analysis of extracts of various cell lines, using RBMS1 antibody ([TA380791]) at 1:1000 dilution. | Secondary antibody: HRP Goat Anti-Rabbit IgG (H+L) at 1:10000 dilution. | Lysates/proteins: 25ug per lane. | Blocking buffer: 3% nonfat dry milk in TBST. | Detection: ECL Basic Kit . | Exposure time: 30s.