

Product datasheet for **TA380789S**

RBM7 Rabbit Polyclonal Antibody

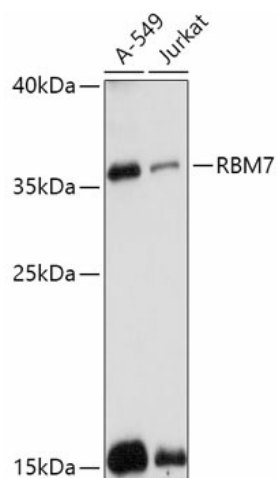
Product data:

Product Type:	Primary Antibodies
Applications:	ELISA, WB
Recommended Dilution:	WB,1:500 - 1:2000 ELISA,Recommended starting concentration is 1 µg/mL. Please optimize the concentration based on your specific assay requirements.
Reactivity:	Human, Mouse
Modifications:	Unmodified
Host:	Rabbit
Isotype:	IgG
Clonality:	Polyclonal
Formulation:	Buffer: PBS with 0.02% sodium azide,50% glycerol,pH7.3.
Concentration:	lot specific
Purification:	Affinity purification
Conjugation:	Unconjugated
Storage:	Store at -20°C. Avoid freeze / thaw cycles.
Stability:	Shelf life: one year from despatch.
Predicted Protein Size:	31kDa
Gene Name:	RNA binding motif protein 7
Database Link:	Entrez Gene 10179 Human Q9Y580
Background:	Enables 14-3-3 protein binding activity; pre-mRNA intronic binding activity; and snRNA binding activity. Involved in snRNA catabolic process. Located in nucleoplasm.
Synonyms:	FLJ11153

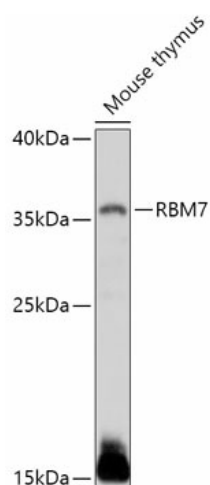


[View online »](#)

Product images:



Western blot analysis of various lysates using RBM7 Rabbit pAb ([TA380789]) at 1:1000 dilution. Secondary antibody: HRP-conjugated Goat anti-Rabbit IgG (H+L) (AS014) at 1:10000 dilution. Lysates/proteins: 25µg per lane. Blocking buffer: 3% nonfat dry milk in TBST. Detection: ECL Basic Kit (RM00020). Exposure time: 90s.



Western blot analysis of lysates from Mouse thymus