

Product datasheet for **TA380788**

RBM6 Rabbit Polyclonal Antibody

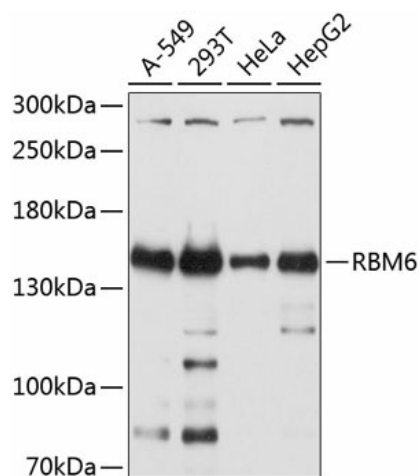
Product data:

Product Type:	Primary Antibodies
Applications:	WB
Recommended Dilution:	WB,1:500 - 1:2000
Reactivity:	Human
Modifications:	Unmodified
Host:	Rabbit
Isotype:	IgG
Clonality:	Polyclonal
Immunogen:	Recombinant fusion protein containing a sequence corresponding to amino acids 530-770 of human RBM6 (NP_005768.1).
Formulation:	Buffer: PBS with 0.02% sodium azide,50% glycerol,pH7.3.
Concentration:	lot specific
Purification:	Affinity purification
Conjugation:	Unconjugated
Storage:	Store at -20°C. Avoid freeze / thaw cycles.
Stability:	Shelf life: one year from despatch.
Predicted Protein Size:	59kDa/69kDa/128kDa
Gene Name:	RNA binding motif protein 6
Database Link:	Entrez Gene 10180 Human P78332
Background:	Specifically binds poly(G RNA homopolymers in vitro.
Synonyms:	3G2; DEF-3; DEF3; DKFZp686B0877; FLJ36517; FLJ39446; FLJ42036; g16; HLC-11; NY-LU-12



[View online »](#)

Product images:



Western blot analysis of extracts of various cell lines, using RBM6 antibody (TA380788) at 1:2000 dilution. | Secondary antibody: HRP Goat Anti-Rabbit IgG (H+L) at 1:10000 dilution. | Lysates/proteins: 25ug per lane. | Blocking buffer: 3% nonfat dry milk in TBST. | Detection: ECL Basic Kit . | Exposure time: 5s.