

Product datasheet for **TA380770S**

RBM14 Rabbit Polyclonal Antibody

Product data:

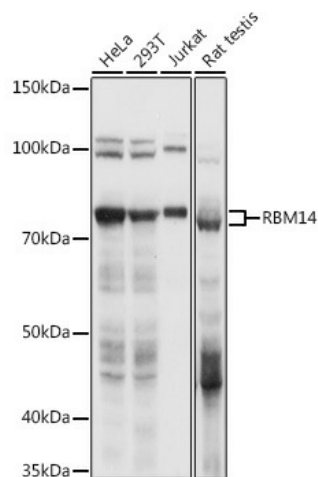
Product Type:	Primary Antibodies
Applications:	ICC/IF, WB
Recommended Dilution:	WB,1:500 - 1:2000 IF,1:50 - 1:200
Reactivity:	Human, Mouse, Rat
Modifications:	Unmodified
Host:	Rabbit
Isotype:	IgG
Clonality:	Polyclonal
Immunogen:	A synthetic peptide corresponding to a sequence within amino acids 500-600 of human RBM14 (NP_006319.1).
Formulation:	Buffer: PBS with 0.02% sodium azide,50% glycerol,pH7.3.
Concentration:	lot specific
Purification:	Affinity purification
Conjugation:	Unconjugated
Storage:	Store at -20°C. Avoid freeze / thaw cycles.
Stability:	Shelf life: one year from despatch.
Predicted Protein Size:	12kDa/13kDa/17kDa/37kDa/69kDa
Gene Name:	RNA binding motif protein 14
Database Link:	Entrez Gene 10432 Human Q96PK6
Background:	This gene encodes a ribonucleoprotein that functions as a general nuclear coactivator, and an RNA splicing modulator. This protein contains two RNA recognition motifs (RRM) at the N-terminus, and multiple hexapeptide repeat domain at the C-terminus that interacts with thyroid hormone receptor-binding protein (TRBP), and is required for transcription activation. Alternatively spliced transcript variants encoding different isoforms (with opposing effects on transcription) have been described for this gene.



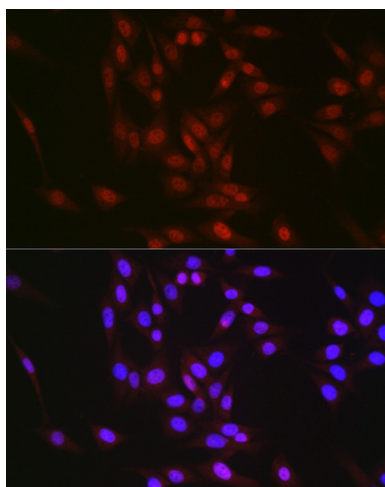
[View online »](#)

Synonyms: COAA; DKFZp779J0927; MGC15912; MGC31756; PSP2; SIP; SYTIP1; TMEM137

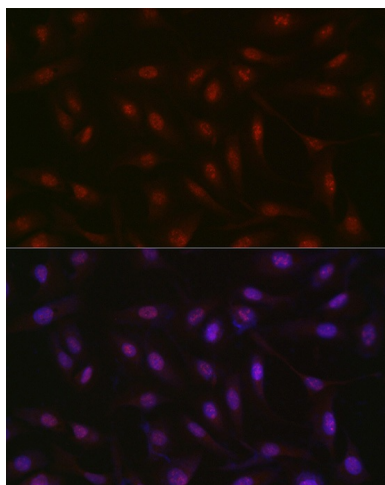
Product images:



Western blot analysis of extracts of various cell lines, using RBM14 antibody ([TA380770]) at 1:1000 dilution. | Secondary antibody: HRP Goat Anti-Rabbit IgG (H+L) at 1:10000 dilution. | Lysates/proteins: 25ug per lane. | Blocking buffer: 3% nonfat dry milk in TBST. | Detection: ECL Basic Kit. | Exposure time: 1s.



Immunofluorescence analysis of NIH/3T3 cells using RBM14 Rabbit pAb ([TA380770]) at dilution of 1:350 (40x lens). Blue: DAPI for nuclear staining.



Immunofluorescence analysis of U2OS cells using RBM14 Rabbit pAb ([TA380770]) at dilution of 1:350 (40x lens). Blue: DAPI for nuclear staining.