

## Product datasheet for **TA380768S**

### **RBM12 Rabbit Polyclonal Antibody**

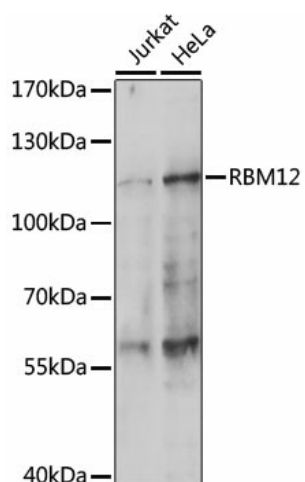
#### **Product data:**

|                                |  |
|--------------------------------|--|
| <b>Product Type:</b>           | Primary Antibodies   |
| <b>Applications:</b>           | WB   |
| <b>Recommended Dilution:</b>   | WB,1:500 - 1:2000  |
| <b>Reactivity:</b>             | Human  |
| <b>Modifications:</b>          | Unmodified   |
| <b>Host:</b>                   | Rabbit   |
| <b>Isotype:</b>                | IgG  |
| <b>Clonality:</b>              | Polyclonal   |
| <b>Immunogen:</b>              | A synthetic peptide corresponding to a sequence within amino acids 800 to the C-terminus of human RBM12 (NP_001185767.1).  |
| <b>Formulation:</b>            | Buffer: PBS with 0.02% sodium azide,50% glycerol,pH7.3.  |
| <b>Concentration:</b>          | lot specific   |
| <b>Purification:</b>           | Affinity purification  |
| <b>Conjugation:</b>            | Unconjugated   |
| <b>Storage:</b>                | Store at -20°C. Avoid freeze / thaw cycles.  |
| <b>Stability:</b>              | Shelf life: one year from despatch.  |
| <b>Predicted Protein Size:</b> | 97kDa  |
| <b>Gene Name:</b>              | RNA binding motif protein 12   |
| <b>Database Link:</b>          | <a href="#">Entrez Gene 10137 Human Q9NTZ6</a>   |
| <b>Background:</b>             | This gene encodes a protein that contains several RNA-binding motifs, potential transmembrane domains, and proline-rich regions. This gene and the gene for copine I overlap at map location 20q11.21. Alternative splicing in the 5' UTR results in four transcript variants. All variants encode the same protein. |
| <b>Synonyms:</b>               | HRIHFB2091; KIAA0765; OTTHUMP00000062718; SWAN   |



[View online »](#)

## Product images:



Western blot analysis of extracts of various cell lines, using RBM12 antibody ([TA380768]) at 1:1000 dilution. | Secondary antibody: HRP Goat Anti-Rabbit IgG (H+L) at 1:10000 dilution. | Lysates/proteins: 25ug per lane. | Blocking buffer: 3% nonfat dry milk in TBST. | Detection: ECL Enhanced Kit . | Exposure time: 180s.