

Product datasheet for **TA380765S**

Rb2 p130 (RBL2) Rabbit Polyclonal Antibody

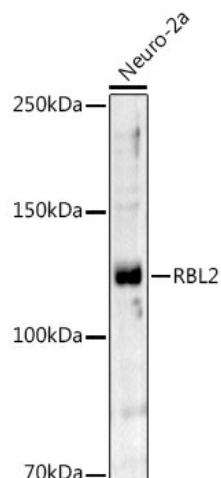
Product data:

Product Type:	Primary Antibodies
Applications:	ELISA, ICC/IF, WB
Recommended Dilution:	WB, 1:500 - 1:1000 IF/ICC, 1:50 - 1:200 ELISA, Recommended starting concentration is 1 µg/mL. Please optimize the concentration based on your specific assay requirements.
Reactivity:	Human, Mouse
Modifications:	Unmodified
Host:	Rabbit
Isotype:	IgG
Clonality:	Polyclonal
Formulation:	Buffer: PBS with 0.02% sodium azide, 50% glycerol, pH 7.3.
Concentration:	lot specific
Purification:	Affinity purification
Conjugation:	Unconjugated
Storage:	Store at -20°C. Avoid freeze / thaw cycles.
Stability:	Shelf life: one year from despatch.
Predicted Protein Size:	128kDa
Gene Name:	RB transcriptional corepressor like 2
Database Link:	Entrez Gene 5934 Human Q08999
Background:	Enables promoter-specific chromatin binding activity. Involved in regulation of lipid kinase activity. Acts upstream of or within negative regulation of gene expression. Located in chromosome; cytosol; and nuclear lumen.
Synonyms:	FLJ26459; p130; PRB2; Rb2; RBR-2

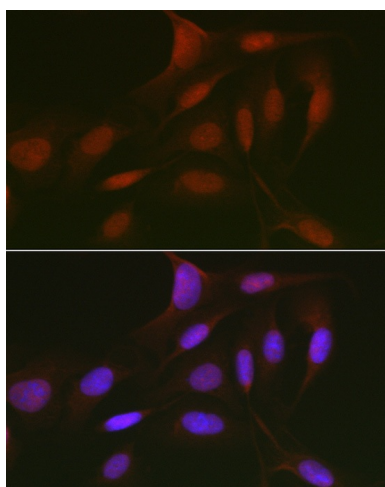


[View online »](#)

Product images:



Western blot analysis of lysates from Neuro-2a cells



Immunofluorescence analysis of U2OS cells using RBL2 Rabbit pAb ([TA380765]) at dilution of 1:50 (40x lens). Secondary antibody: Cy3-conjugated Goat anti-Rabbit IgG (H+L) (AS007) at 1:500 dilution. Blue: DAPI for nuclear staining.