

Product datasheet for **TA380747**

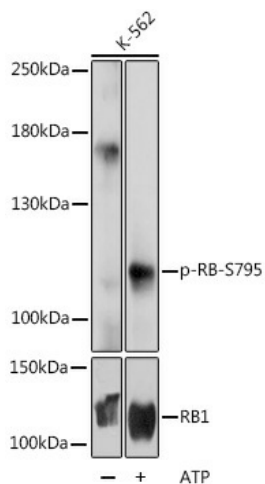
Rb (RB1) Rabbit Polyclonal Antibody

Product data:

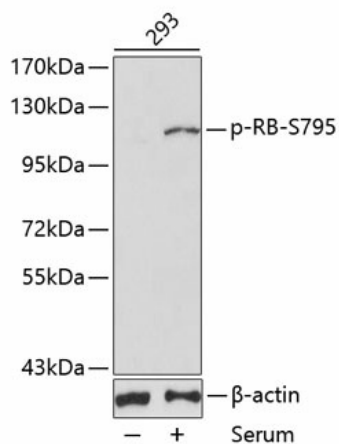
Product Type:	Primary Antibodies
Applications:	IHC, WB
Recommended Dilution:	WB,1:500 - 1:1000 IHC,1:50 - 1:200
Reactivity:	Human, Mouse, Rat
Modifications:	Phospho S795
Host:	Rabbit
Isotype:	IgG
Clonality:	Polyclonal
Immunogen:	A synthetic phosphorylated peptide around S795 of human RB (NP_000312.2).
Formulation:	Buffer: PBS with 0.02% sodium azide,50% glycerol,pH7.3.
Concentration:	lot specific
Purification:	Affinity purification
Conjugation:	Unconjugated
Storage:	Store at -20°C. Avoid freeze / thaw cycles.
Stability:	Shelf life: one year from despatch.
Predicted Protein Size:	106kDa
Gene Name:	RB transcriptional corepressor 1
Database Link:	Entrez Gene 5925 Human P06400
Background:	The protein encoded by this gene is a negative regulator of the cell cycle and was the first tumor suppressor gene found. The encoded protein also stabilizes constitutive heterochromatin to maintain the overall chromatin structure. The active, hypophosphorylated form of the protein binds transcription factor E2F1. Defects in this gene are a cause of childhood cancer retinoblastoma (RB), bladder cancer, and osteogenic sarcoma.
Synonyms:	OSRC; osteosarcoma; p105-Rb; pp110; pRb; RB



[View online »](#)

Product images:


Western blot analysis of extracts of K-562 cells, using Phospho-RB-S795 pAb (TA380747) at 1:1000 dilution or RB1 antibody (A16966). K-562 cells were treated by ATP (5 mM) at 30°C for 1 hour. | Secondary antibody: HRP Goat Anti-Rabbit IgG (H+L) at 1:10000 dilution. | Lysates/proteins: 25ug per lane. | Blocking buffer: 3% BSA. | Detection: ECL Basic Kit. | Exposure time: 1s.



Western blot analysis of extracts of 293 cell line, using phospho-RB-S795 antibody (TA380747). | Secondary antibody: HRP Goat Anti-Rabbit IgG (H+L) at 1:10000 dilution. | Lysates/proteins: 25ug per lane. | Blocking buffer: 3% BSA.