

Product datasheet for **TA380745**

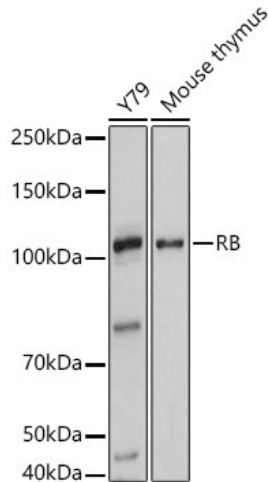
Rb (RB1) Rabbit Polyclonal Antibody

Product data:

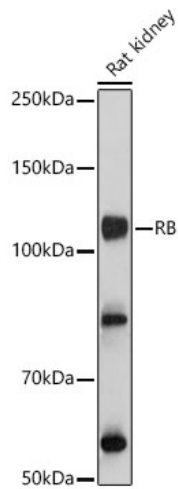
Product Type:	Primary Antibodies
Applications:	ICC/IF, IHC, WB
Recommended Dilution:	WB,1:500 - 1:2000 IHC,1:50 - 1:100 IF,1:50 - 1:100
Reactivity:	Human, Mouse, Rat
Host:	Rabbit
Isotype:	IgG
Clonality:	Polyclonal
Immunogen:	Recombinant protein of human RB.
Formulation:	Buffer: PBS with 0.02% sodium azide,50% glycerol,pH7.3.
Concentration:	lot specific
Purification:	Affinity purification
Conjugation:	Unconjugated
Storage:	Store at -20°C. Avoid freeze / thaw cycles.
Stability:	Shelf life: one year from despatch.
Predicted Protein Size:	106kDa
Gene Name:	RB transcriptional corepressor 1
Database Link:	Entrez Gene 5925 Human P06400
Background:	The protein encoded by this gene is a negative regulator of the cell cycle and was the first tumor suppressor gene found. The encoded protein also stabilizes constitutive heterochromatin to maintain the overall chromatin structure. The active, hypophosphorylated form of the protein binds transcription factor E2F1. Defects in this gene are a cause of childhood cancer retinoblastoma (RB), bladder cancer, and osteogenic sarcoma.
Synonyms:	OSRC; osteosarcoma; p105-Rb; pp110; pRb; RB



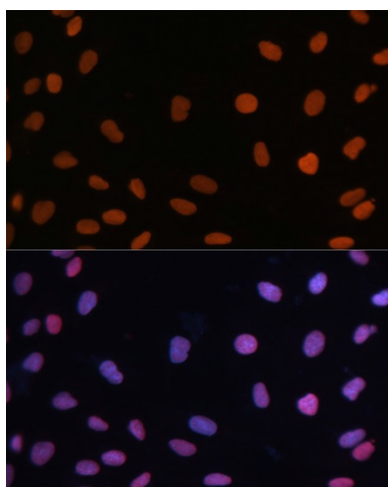
[View online »](#)

Product images:


Western blot analysis of extracts of various cell lines, using RB antibody (TA380745) at 1:1000 dilution. | Secondary antibody: HRP Goat Anti-Rabbit IgG (H+L) at 1:10000 dilution. | Lysates/proteins: 25ug per lane. | Blocking buffer: 3% nonfat dry milk in TBST. | Detection: ECL Basic Kit . | Exposure time: 30s.



Western blot analysis of extracts of Rat kidney, using RB antibody (TA380745) at 1:1000 dilution. | Secondary antibody: HRP Goat Anti-Rabbit IgG (H+L) at 1:10000 dilution. | Lysates/proteins: 25ug per lane. | Blocking buffer: 3% nonfat dry milk in TBST. | Detection: ECL Basic Kit . | Exposure time: 180s.



Immunofluorescence analysis of U-2 OS cells using Rb antibody (TA380745) at dilution of 1:100. Blue: DAPI for nuclear staining.