

Product datasheet for **TA380711S**

RAGEF2 (RAPGEF6) Rabbit Polyclonal Antibody

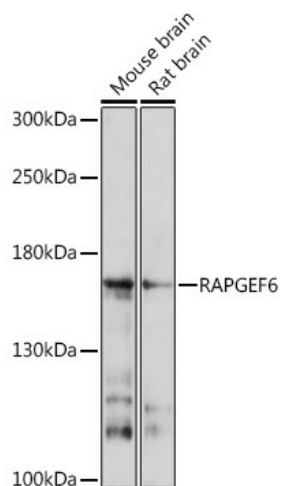
Product data:

Product Type:	Primary Antibodies
Applications:	ELISA, WB
Recommended Dilution:	WB, 1:500 - 1:2000 ELISA, Recommended starting concentration is 1 µg/mL. Please optimize the concentration based on your specific assay requirements.
Reactivity:	Mouse, Rat
Host:	Rabbit
Isotype:	IgG
Clonality:	Polyclonal
Formulation:	Buffer: PBS with 0.02% sodium azide, 50% glycerol, pH 7.3.
Concentration:	lot specific
Purification:	Affinity purification
Conjugation:	Unconjugated
Storage:	Store at -20°C. Avoid freeze / thaw cycles.
Stability:	Shelf life: one year from despatch.
Predicted Protein Size:	179kDa
Gene Name:	Rap guanine nucleotide exchange factor 6
Database Link:	Q8TEU7
Background:	Enables several functions, including GTP-dependent protein binding activity; guanyl-nucleotide exchange factor activity; and phosphatidic acid binding activity. Involved in microvillus assembly; positive regulation of GTPase activity; and protein localization to plasma membrane. Located in several cellular components, including apical plasma membrane; centrosome; and endocytic vesicle.
Synonyms:	DKFZp667N084; DKFZp686I15116; KIA001LB; PDZ-GEF2; PDZGEF2; RA-GEF-2; RAGEF2



[View online »](#)

Product images:



Western blot analysis of various lysates using RAPGEF6 Rabbit pAb ([TA380711S]) at 1:1000 dilution.

Secondary antibody: HRP-conjugated Goat anti-Rabbit IgG (H+L) (AS014) at 1:10000 dilution.

Lysates/proteins: 25µg per lane.

Blocking buffer: 3% nonfat dry milk in TBST.

Detection: ECL Basic Kit (RM00020).

Exposure time: 30s.