

Product datasheet for **TA380711**

RAGEF2 (RAPGEF6) Rabbit Polyclonal Antibody

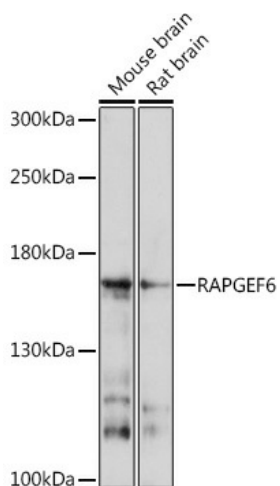
Product data:

Product Type:	Primary Antibodies
Applications:	WB
Recommended Dilution:	WB,1:500 - 1:2000
Reactivity:	Mouse, Rat
Host:	Rabbit
Isotype:	IgG
Clonality:	Polyclonal
Immunogen:	Recombinant fusion protein containing a sequence corresponding to amino acids 145-240 of human RAPGEF6 (NP_001157858).
Formulation:	Buffer: PBS with 0.02% sodium azide,50% glycerol,pH7.3.
Concentration:	lot specific
Purification:	Affinity purification
Conjugation:	Unconjugated
Storage:	Store at -20°C. Avoid freeze / thaw cycles.
Stability:	Shelf life: one year from despatch.
Gene Name:	Rap guanine nucleotide exchange factor 6
Database Link:	Q8TEU7
Background:	Guanine nucleotide exchange factor (GEF for Rap1A, Rap2A and M-Ras GTPases. Does not interact with cAMP.
Synonyms:	DKFZp667N084; DKFZp686I15116; KIA001LB; PDZ-GEF2; PDZGEF2; RA-GEF-2; RAGEF2



[View online »](#)

Product images:



Western blot analysis of extracts of various cell lines, using RAGEF6 Rabbit pAb (TA380711) at 1:1000 dilution. | Secondary antibody: HRP Goat Anti-Rabbit IgG (H+L) at 1:10000 dilution. | Lysates/proteins: 25ug per lane. | Blocking buffer: 3% nonfat dry milk in TBST. | Detection: ECL Basic Kit . | Exposure time: 30s.