

Product datasheet for **TA380710S**

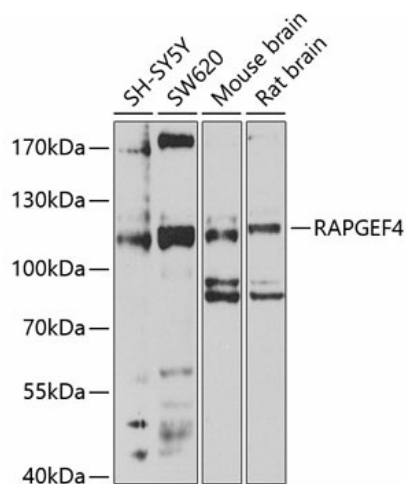
Epac2 (RAPGEF4) Rabbit Polyclonal Antibody

Product data:

Product Type:	Primary Antibodies
Applications:	ELISA, WB
Recommended Dilution:	WB, 1:500 - 1:2000 ELISA, Recommended starting concentration is 1 µg/mL. Please optimize the concentration based on your specific assay requirements.
Reactivity:	Human, Mouse, Rat
Modifications:	Unmodified
Host:	Rabbit
Isotype:	IgG
Clonality:	Polyclonal
Formulation:	Buffer: PBS with 0.02% sodium azide, 50% glycerol, pH 7.3.
Concentration:	lot specific
Purification:	Affinity purification
Conjugation:	Unconjugated
Storage:	Store at -20°C. Avoid freeze / thaw cycles.
Stability:	Shelf life: one year from despatch.
Predicted Protein Size:	116kDa
Gene Name:	Rap guanine nucleotide exchange factor 4
Database Link:	Entrez Gene 11069 Human Q8WZA2
Background:	Enables guanyl-nucleotide exchange factor activity. Predicted to be involved in regulation of neurotransmitter receptor localization to postsynaptic specialization membrane and regulation of postsynapse organization. Predicted to act upstream of or within adenylate cyclase-activating G protein-coupled receptor signaling pathway; regulation of exocytosis; and secretion by cell. Predicted to be located in plasma membrane. Predicted to be active in glutamatergic synapse; hippocampal mossy fiber to CA3 synapse; and postsynaptic density. Implicated in autistic disorder.
Synonyms:	CAMP-GEFII; CGEF2; EPAC2; Nbla00496


[View online »](#)

Product images:



Western blot analysis of various lysates using RAPGEF4 Rabbit pAb (TA380710S) at 1:1000 dilution.

Secondary antibody: HRP-conjugated Goat anti-Rabbit IgG (H+L) (AS014) at 1:10000 dilution.

Lysates/proteins: 25µg per lane.

Blocking buffer: 3% nonfat dry milk in TBST.

Detection: ECL Enhanced Kit (RM00021).

Exposure time: 30s.