

## Product datasheet for **TA380699S**

### RANBP10 Rabbit Polyclonal Antibody

#### Product data:

Product Type:	Primary Antibodies
Applications:	WB
Recommended Dilution:	WB,1:500 - 1:2000
Reactivity:	Human, Mouse
Modifications:	Unmodified
Host:	Rabbit
Isotype:	IgG
Clonality:	Polyclonal
Immunogen:	Recombinant fusion protein containing a sequence corresponding to amino acids 362-497 of human RANBP10 (NP_065901.1).
Formulation:	Buffer: PBS with 0.02% sodium azide,50% glycerol,pH7.3.
Concentration:	lot specific
Purification:	Affinity purification
Conjugation:	Unconjugated
Storage:	Store at -20°C. Avoid freeze / thaw cycles.
Stability:	Shelf life: one year from despatch.
Predicted Protein Size:	58kDa/64kDa/67kDa
Gene Name:	RAN binding protein 10
Database Link:	<a href="#">Entrez Gene 57610 Human Q6VN20</a>

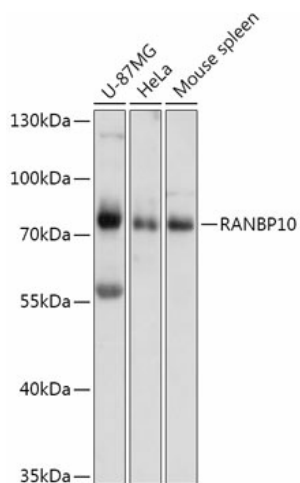
**Background:** RAN is a small GTPase involved in the assembly of microtubules to form mitotic spindles. The protein encoded by this gene is a cytoplasmic guanine nucleotide exchange factor (GEF) that binds beta-tubulin and has GEF activity toward RAN. The encoded protein plays a role in the formation of noncentrosomal microtubules. In addition, this protein may be involved in the regulation of D(1) receptor signaling by protein kinase C delta and protein kinase C gamma. Several transcript variants encoding different isoforms have been found for this gene. [provided by RefSeq, Feb 2016]



[View online »](#)

Synonyms: FLJ31165; KIAA1464

### Product images:



Western blot analysis of extracts of various cell lines, using RANBP10 antibody ([TA380699]) at 1:1000 dilution. | Secondary antibody: HRP Goat Anti-Rabbit IgG (H+L) at 1:10000 dilution. | Lysates/proteins: 25ug per lane. | Blocking buffer: 3% nonfat dry milk in TBST. | Detection: ECL Basic Kit . | Exposure time: 10s.