

Product datasheet for **TA380693S**

RALGPS1 Rabbit Polyclonal Antibody

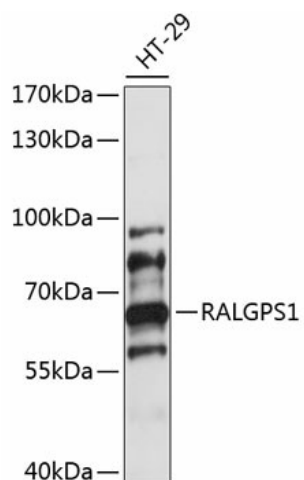
Product data:

Product Type:	Primary Antibodies
Applications:	WB
Recommended Dilution:	WB,1:500 - 1:2000
Reactivity:	Human
Modifications:	Unmodified
Host:	Rabbit
Isotype:	IgG
Clonality:	Polyclonal
Immunogen:	Recombinant fusion protein containing a sequence corresponding to amino acids 1-300 of human RALGPS1 (NP_055451.1).
Formulation:	Buffer: PBS with 0.02% sodium azide,50% glycerol,pH7.3.
Concentration:	lot specific
Purification:	Affinity purification
Conjugation:	Unconjugated
Storage:	Store at -20°C. Avoid freeze / thaw cycles.
Stability:	Shelf life: one year from despatch.
Predicted Protein Size:	11kDa/24kDa/34kDa/43kDa/58kDa/59kDa/62kDa
Gene Name:	Ral GEF with PH domain and SH3 binding motif 1
Database Link:	Entrez Gene 9649 Human Q5JS13
Background:	Guanine nucleotide exchange factor (GEF for the small GTPase RALA. May be involved in cytoskeletal organization (By similarity. Guanine nucleotide exchange factor for.
Synonyms:	KIAA0351; RALGEF2; RALGPS1A



[View online »](#)

Product images:



Western blot analysis of extracts of HT-29 cells, using RALGPS1 antibody ([TA380693]) at 1:1000 dilution. | Secondary antibody: HRP Goat Anti-Rabbit IgG (H+L) at 1:10000 dilution. | Lysates/proteins: 25ug per lane. | Blocking buffer: 3% nonfat dry milk in TBST. | Detection: ECL Basic Kit . | Exposure time: 60s.