

Product datasheet for **TA380679S**

RAF1 Rabbit Polyclonal Antibody

Product data:

Product Type:	Primary Antibodies
Applications:	IP, WB
Recommended Dilution:	WB, 1:500 - 1:2000 IP, 1:50 - 1:100
Reactivity:	Human
Modifications:	Phospho S621
Host:	Rabbit
Isotype:	IgG
Clonality:	Polyclonal
Immunogen:	A synthetic phosphorylated peptide around S621 of human Phospho-Raf1-S621 (NP_002871.1).
Formulation:	Buffer: PBS with 0.02% sodium azide, 50% glycerol, pH 7.3.
Concentration:	lot specific
Purification:	Affinity purification
Conjugation:	Unconjugated
Storage:	Store at -20°C. Avoid freeze / thaw cycles.
Stability:	Shelf life: one year from despatch.
Predicted Protein Size:	73kDa/75kDa
Gene Name:	Raf-1 proto-oncogene, serine/threonine kinase
Database Link:	Entrez Gene 5894 Human P04049



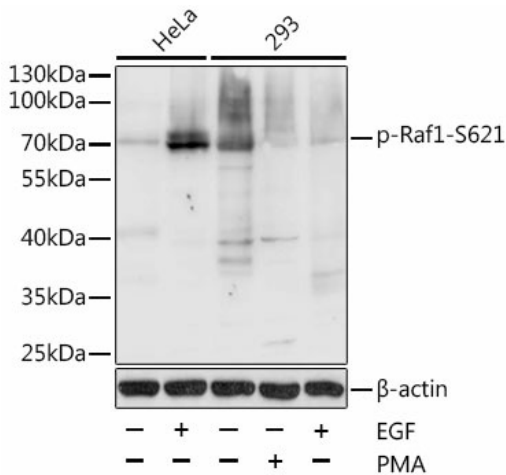
[View online »](#)

Background:

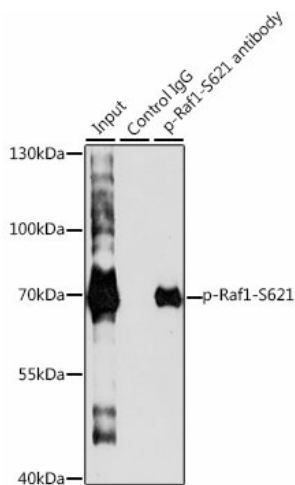
This gene is the cellular homolog of viral raf gene (v-raf). The encoded protein is a MAP kinase kinase kinase (MAP3K), which functions downstream of the Ras family of membrane associated GTPases to which it binds directly. Once activated, the cellular RAF1 protein can phosphorylate to activate the dual specificity protein kinases MEK1 and MEK2, which in turn phosphorylate to activate the serine/threonine specific protein kinases, ERK1 and ERK2. Activated ERKs are pleiotropic effectors of cell physiology and play an important role in the control of gene expression involved in the cell division cycle, apoptosis, cell differentiation and cell migration. Mutations in this gene are associated with Noonan syndrome 5 and LEOPARD syndrome 2.

Synonyms:

C-RAF; CRAF; NS5; RAF; Raf-1

Product images:


Western blot analysis of extracts of HeLa and 293T cells, using Phospho-Raf1-S621 antibody ([TA380679]) at 1:1000 dilution. HeLa cells were treated by EGF (100ng/mL) for 30 minutes after serum-starvation overnight. 293T cells were treated by PMA/TPA (200nM) for 30 minutes or treated by EGF (25ug/mL) for 30 minutes after serum-starvation overnight. | Secondary antibody: HRP Goat Anti-Rabbit IgG (H+L) at 1:10000 dilution. | Lysates/proteins: 25ug per lane. | Blocking buffer: 3% BSA.



Immunoprecipitation analysis of 200ug extracts of HeLa cells, using 3 ug Phospho-Raf1-S621 pAb ([TA380679]). Western blot was performed from the immunoprecipitate using Phospho-Raf1-S621 pAb ([TA380679]) at a dilution of 1:1000. HeLa cells were treated by EGF (100 ng/mL) at 37°C for 30 minutes after serum-starvation overnight.