

## Product datasheet for **TA380669S**

### **RAD51 Rabbit Polyclonal Antibody**

#### **Product data:**

Product Type:	Primary Antibodies
Applications:	ELISA, IHC, WB
Recommended Dilution:	WB, 1:500 - 1:1000 IHC-P, 1:50 - 1:200 ELISA, Recommended starting concentration is 1 µg/mL. Please optimize the concentration based on your specific assay requirements.
Reactivity:	Human, Mouse, Rat
Modifications:	Unmodified
Host:	Rabbit
Isotype:	IgG
Clonality:	Polyclonal
Formulation:	Buffer: PBS with 0.02% sodium azide, 50% glycerol, pH 7.3.
Concentration:	lot specific
Purification:	Affinity purification
Conjugation:	Unconjugated
Storage:	Store at -20°C. Avoid freeze / thaw cycles.
Stability:	Shelf life: one year from despatch.
Predicted Protein Size:	37kDa
Gene Name:	RAD51 recombinase
Database Link:	<a href="#">Entrez Gene 5888 Human Q06609</a>



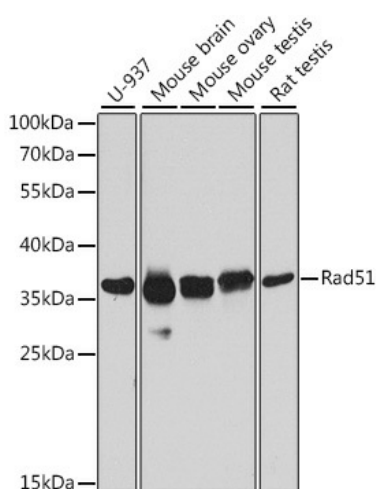
[View online »](#)

**Background:**

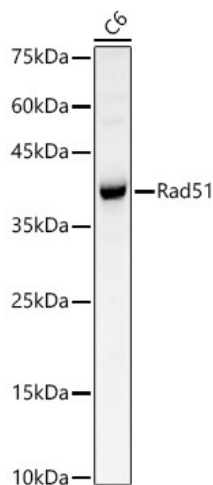
The protein encoded by this gene is a member of the RAD51 protein family. RAD51 family members are highly similar to bacterial RecA and *Saccharomyces cerevisiae* Rad51, and are known to be involved in the homologous recombination and repair of DNA. This protein can interact with the ssDNA-binding protein RPA and RAD52, and it is thought to play roles in homologous pairing and strand transfer of DNA. This protein is also found to interact with BRCA1 and BRCA2, which may be important for the cellular response to DNA damage. BRCA2 is shown to regulate both the intracellular localization and DNA-binding ability of this protein. Loss of these controls following BRCA2 inactivation may be a key event leading to genomic instability and tumorigenesis. Multiple transcript variants encoding different isoforms have been found for this gene.

**Synonyms:**

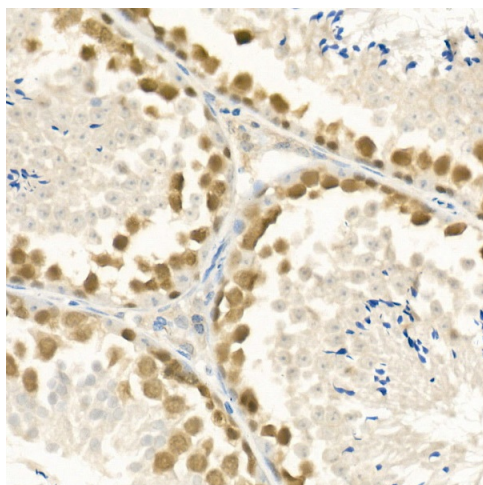
BRCC5; HRAD51; HsRad51; HsT16930; RAD51A; RAD51D; RAD51L3; RECA

**Product images:**


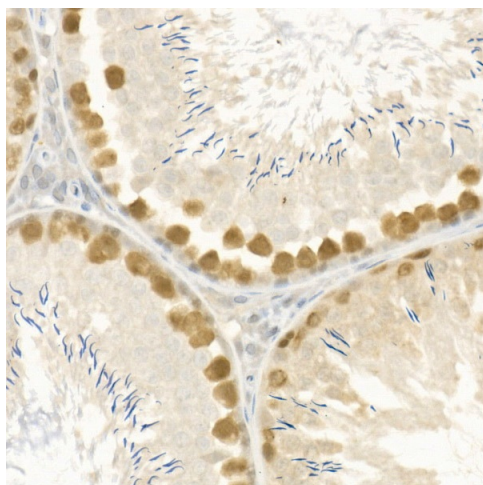
Western blot analysis of various lysates using Rad51 Rabbit pAb (TA380669) at 1:1000 dilution. Secondary antibody: HRP-conjugated Goat anti-Rabbit IgG (H+L) (AS014) at 1:10000 dilution. Lysates / proteins: 25 µg per lane. Blocking buffer: 3 % nonfat dry milk in TBST. Detection: ECL Basic Kit (RM00020). Exposure time: 30s.



Western blot analysis of lysates from Jurkat cells using Rad51 Rabbit pAb (TA380669) at 1:1000 dilution. Secondary antibody: HRP-conjugated Goat anti-Rabbit IgG (H+L) (AS014) at 1:10000 dilution. Lysates/proteins: 25 µg per lane. Blocking buffer: 3% nonfat dry milk in TBST. Detection: ECL Basic Kit (RM00020). Exposure time: 1s.



Immunohistochemistry analysis of paraffin-embedded Mouse testis using Rad51 Rabbit pAb ([TA380669]) at dilution of 1:50 (40x lens). High pressure antigen retrieval performed with 0.01M Citrate Bufferr (pH 6.0) prior to IHC staining.



Immunohistochemistry analysis of paraffin-embedded Rat testis using Rad51 Rabbit pAb ([TA380669]) at dilution of 1:50 (40x lens). High pressure antigen retrieval performed with 0.01M Citrate Bufferr (pH 6.0) prior to IHC staining.