

Product datasheet for **TA380666**

RAD21 Rabbit Polyclonal Antibody

Product data:

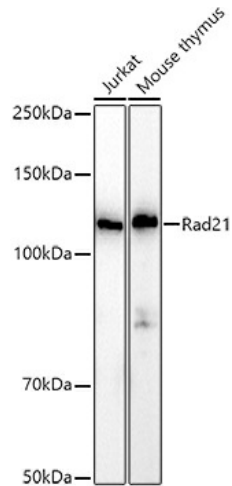
Product Type:	Primary Antibodies
Applications:	ChIP, ICC/IF, IHC, IP, WB
Recommended Dilution:	WB,1:500 - 1:2000 IHC,1:50 - 1:200 IF,1:50 - 1:200 IP,1:50 - 1:200 ChIP,1:50 - 1:200
Reactivity:	Human, Mouse, Rat
Host:	Rabbit
Isotype:	IgG
Clonality:	Polyclonal
Immunogen:	Recombinant protein of human Rad21 .
Formulation:	Buffer: PBS with 0.02% sodium azide,50% glycerol,pH7.3.
Concentration:	lot specific
Purification:	Affinity purification
Conjugation:	Unconjugated
Storage:	Store at -20°C. Avoid freeze / thaw cycles.
Stability:	Shelf life: one year from despatch.
Gene Name:	RAD21 cohesin complex component
Database Link:	Entrez Gene 5885 Human O60216

Background: The protein encoded by this gene is highly similar to the gene product of *Schizosaccharomyces pombe rad21*, a gene involved in the repair of DNA double-strand breaks, as well as in chromatid cohesion during mitosis. This protein is a nuclear phospho-protein, which becomes hyperphosphorylated in cell cycle M phase. The highly regulated association of this protein with mitotic chromatin specifically at the centromere region suggests its role in sister chromatid cohesion in mitotic cells. [provided by RefSeq, Jul 2008]

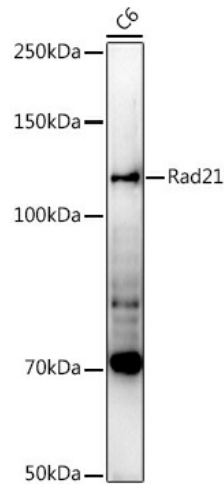
Synonyms: FLJ25655; FLJ40596; hHR21; HR21; HRAD21; KIAA0078; MCD1; NXP-1; NXP1; SCC1



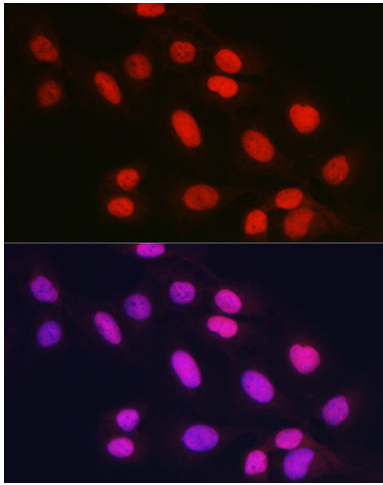
[View online »](#)

Product images:


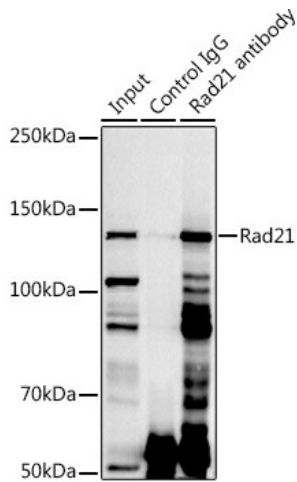
Western blot analysis of extracts of various cell lines, using Rad21 antibody (TA380666) at 1:1000 dilution. | Secondary antibody: HRP Goat Anti-Rabbit IgG (H+L) at 1:10000 dilution. | Lysates/proteins: 25ug per lane. | Blocking buffer: 3% nonfat dry milk in TBST. | Detection: ECL Basic Kit . | Exposure time: 10s.



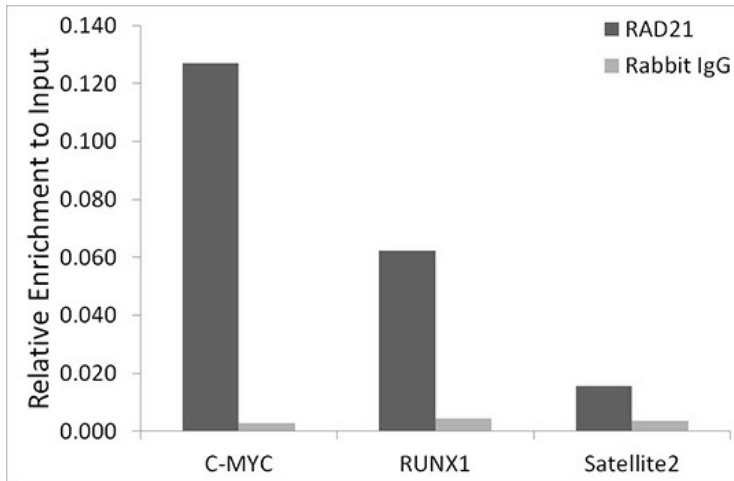
Western blot analysis of extracts of C6 cells, using Rad21 antibody (TA380666) at 1:1000 dilution. | Secondary antibody: HRP Goat Anti-Rabbit IgG (H+L) at 1:10000 dilution. | Lysates/proteins: 25ug per lane. | Blocking buffer: 3% nonfat dry milk in TBST. | Detection: ECL Enhanced Kit . | Exposure time: 90s.



Immunofluorescence analysis of U2OS cells using Rad21 Rabbit pAb (TA380666) at dilution of 1:150 (40x lens). Blue: DAPI for nuclear staining.



Immunoprecipitation analysis of 300ug extracts of Jurkat cells using 3ug Rad21 antibody (TA380666). Western blot was performed from the immunoprecipitate using Rad21 antibody (TA380666) at a dilution of 1:1000.



Chromatin immunoprecipitation analysis of extracts of A-549 cells, using Rad21 antibody (TA380666) and rabbit IgG. The amount of immunoprecipitated DNA was checked by quantitative PCR. Histogram was constructed by the ratios of the immunoprecipitated DNA to the input.