

## Product datasheet for **TA380660S**

### RAC1 Rabbit Polyclonal Antibody

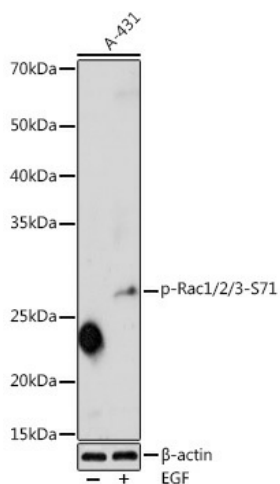
#### Product data:

Product Type:	Primary Antibodies
Applications:	WB
Recommended Dilution:	WB,1:500 - 1:2000
Reactivity:	Human, Rat
Modifications:	Phospho S71
Host:	Rabbit
Isotype:	IgG
Clonality:	Polyclonal
Immunogen:	A synthetic phosphorylated peptide around S71 of human RAC1 (NP_008839.2).
Formulation:	Buffer: PBS with 0.02% sodium azide,50% glycerol,pH7.3.
Concentration:	lot specific
Purification:	Affinity purification
Conjugation:	Unconjugated
Storage:	Store at -20°C. Avoid freeze / thaw cycles.
Stability:	Shelf life: one year from despatch.
Predicted Protein Size:	21kDa/23kDa
Gene Name:	ras-related C3 botulinum toxin substrate 1 (rho family, small GTP binding protein Rac1)
Database Link:	<a href="#">Entrez Gene 5879 Human P63000</a>
Background:	The protein encoded by this gene is a GTPase which belongs to the RAS superfamily of small GTP-binding proteins. Members of this superfamily appear to regulate a diverse array of cellular events, including the control of cell growth, cytoskeletal reorganization, and the activation of protein kinases. Two transcript variants encoding different isoforms have been found for this gene.
Synonyms:	MGC111543; MIG5; p21-Rac1; PAK1; TC-25



[View online »](#)

## Product images:



Western blot analysis of extracts of A-431 cells, using Phospho-Rac1/2/3-S71 antibody ([TA380660]) at 1:1000 dilution. A-431 cells were treated by EGF (25 ug/ml) at 37°C for 30 minutes after serum-starvation overnight. | Secondary antibody: HRP Goat Anti-Rabbit IgG (H+L) at 1:10000 dilution. | Lysates/proteins: 25ug per lane. | Blocking buffer: 3% nonfat dry milk in TBST. | Detection: ECL Enhanced Kit. | Exposure time: 180s.