

## Product datasheet for **TA380658**

### **RABL3 Rabbit Polyclonal Antibody**

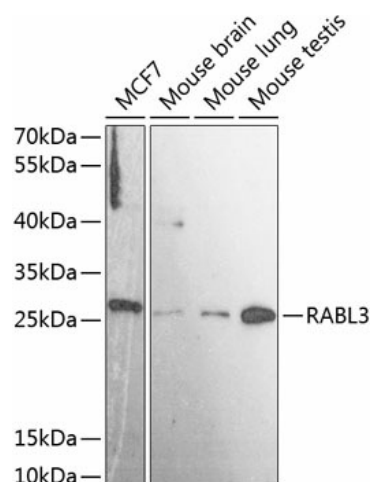
#### **Product data:**

Product Type:	Primary Antibodies
Applications:	ICC/IF, WB
Recommended Dilution:	WB,1:500 - 1:2000 IF,1:50 - 1:200
Reactivity:	Human, Mouse
Modifications:	Unmodified
Host:	Rabbit
Isotype:	IgG
Clonality:	Polyclonal
Immunogen:	Recombinant fusion protein containing a sequence corresponding to amino acids 1-236 of human RABL3 (NP_776186.2).
Formulation:	Buffer: PBS with 0.02% sodium azide,50% glycerol,pH7.3.
Concentration:	lot specific
Purification:	Affinity purification
Conjugation:	Unconjugated
Storage:	Store at -20°C. Avoid freeze / thaw cycles.
Stability:	Shelf life: one year from despatch.
Predicted Protein Size:	26kDa
Gene Name:	RAB, member of RAS oncogene family like 3
Database Link:	<a href="#">Entrez Gene 285282 Human Q5HYI8</a>
Background:	Required for KRAS signaling regulation and modulation of cell proliferation. Regulator of KRAS prenylation, and probably prenylation of other small GTPases. Required for lymphocyte development and function (By similarity. Not required for myeloid cell development (By similarity.
Synonyms:	MGC23920

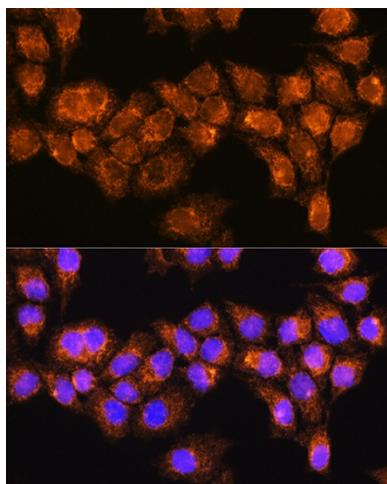


[View online »](#)

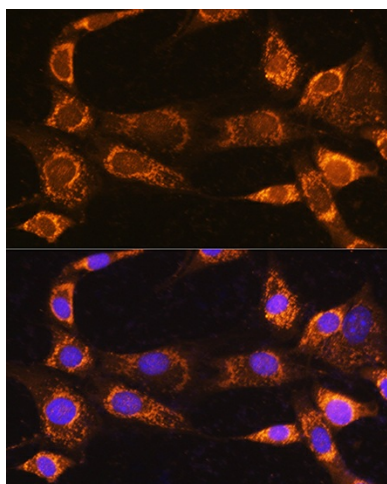
## Product images:



Western blot analysis of extracts of various cell lines, using RABL3 antibody (TA380658) at 1:3000 dilution. | Secondary antibody: HRP Goat Anti-Rabbit IgG (H+L) at 1:10000 dilution. | Lysates/proteins: 25ug per lane. | Blocking buffer: 3% nonfat dry milk in TBST. | Detection: ECL Basic Kit . | Exposure time: 90s.



Immunofluorescence analysis of HeLa cells using RABL3 Rabbit pAb (TA380658) at dilution of 1:100. Blue: DAPI for nuclear staining.



Immunofluorescence analysis of NIH/3T3 cells using RABL3 Rabbit pAb (TA380658) at dilution of 1:100. Blue: DAPI for nuclear staining.

