

Product datasheet for **TA380657**

RABIF Rabbit Polyclonal Antibody

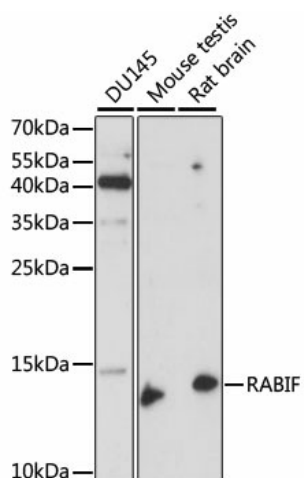
Product data:

Product Type:	Primary Antibodies
Applications:	ICC/IF, WB
Recommended Dilution:	WB,1:500 - 1:2000 IF,1:50 - 1:100
Reactivity:	Human, Mouse, Rat
Modifications:	Unmodified
Host:	Rabbit
Isotype:	IgG
Clonality:	Polyclonal
Immunogen:	Recombinant fusion protein containing a sequence corresponding to amino acids 1-123 of human RABIF (NP_002862.2).
Formulation:	Buffer: PBS with 0.02% sodium azide,50% glycerol,pH7.3.
Concentration:	lot specific
Purification:	Affinity purification
Conjugation:	Unconjugated
Storage:	Store at -20°C. Avoid freeze / thaw cycles.
Stability:	Shelf life: one year from despatch.
Predicted Protein Size:	13kDa
Gene Name:	RAB interacting factor
Database Link:	Entrez Gene 5877 Human P47224
Background:	This gene encodes a member of the SCE4/YPT1/RAB family of small GTP-binding proteins that are involved in the regulation of intracellular vesicular transport. This protein stimulates GTP-GDP exchange in SEC4, and to a lesser extent in YPT1 and RAB3A, and may play a general role in vesicular transport.
Synonyms:	mss4; RASGFR3; RASGRF3

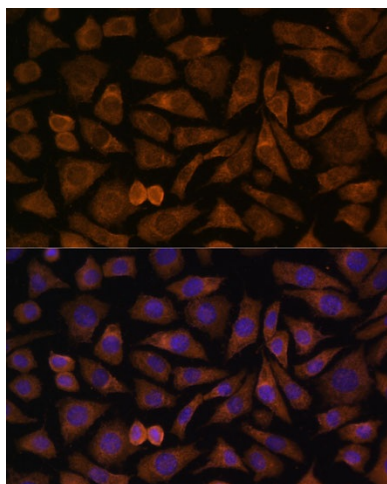


[View online »](#)

Product images:



Western blot analysis of extracts of various cell lines, using RABIF antibody (TA380657) at 1:1000 dilution. | Secondary antibody: HRP Goat Anti-Rabbit IgG (H+L) at 1:10000 dilution. | Lysates/proteins: 25ug per lane. | Blocking buffer: 3% nonfat dry milk in TBST. | Detection: ECL Enhanced Kit. | Exposure time: 90s.



Immunofluorescence analysis of L929 cells using RABIF Polyclonal Antibody (TA380657) at dilution of 1:100 (40x lens). Blue: DAPI for nuclear staining.