

## Product datasheet for **TA380650S**

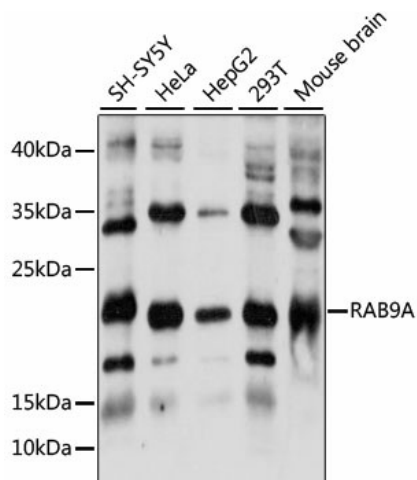
### **Rab9 (RAB9A) Rabbit Polyclonal Antibody**

#### **Product data:**

Product Type:	Primary Antibodies
Applications:	ELISA, WB
Recommended Dilution:	WB, 1:500 - 1:2000 ELISA, Recommended starting concentration is 1 µg/mL. Please optimize the concentration based on your specific assay requirements.
Reactivity:	Human, Mouse
Modifications:	Unmodified
Host:	Rabbit
Isotype:	IgG
Clonality:	Polyclonal
Formulation:	Buffer: PBS with 0.02% sodium azide, 50% glycerol, pH 7.3.
Concentration:	lot specific
Purification:	Affinity purification
Conjugation:	Unconjugated
Storage:	Store at -20°C. Avoid freeze / thaw cycles.
Stability:	Shelf life: one year from despatch.
Predicted Protein Size:	23kDa
Gene Name:	RAB9A, member RAS oncogene family
Database Link:	<a href="#">Entrez Gene 9367 Human P51151</a>
Background:	Enables GDP binding activity; GTP binding activity; and GTPase activity. Involved in negative regulation by host of symbiont catalytic activity; positive regulation of exocytosis; and regulation of protein localization. Located in late endosome; lysosome; and phagocytic vesicle.
Synonyms:	Rab-9A; RAB9



[View online »](#)

**Product images:**


Western blot analysis of various lysates using RAB9A Rabbit pAb (TA380650) at 1:1000 dilution.

Secondary antibody: HRP-conjugated Goat anti-Rabbit IgG (H+L) (AS014) at 1:10000 dilution.

Lysates/proteins: 25µg per lane.

Blocking buffer: 3% nonfat dry milk in TBST.

Detection: ECL Basic Kit (RM00020).

Exposure time: 30s.