

Product datasheet for **TA380643S**

RAB5B Rabbit Polyclonal Antibody

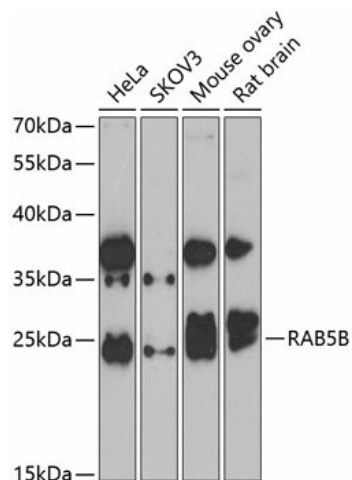
Product data:

Product Type:	Primary Antibodies
Applications:	ICC/IF, WB
Recommended Dilution:	WB,1:500 - 1:2000 IHC,1:50 - 1:200 IF,1:50 - 1:200
Reactivity:	Human, Mouse, Rat
Modifications:	Unmodified
Host:	Rabbit
Isotype:	IgG
Clonality:	Polyclonal
Immunogen:	Recombinant fusion protein containing a sequence corresponding to amino acids 1-215 of human RAB5B (NP_002859.1).
Formulation:	PBS with 0.09% Sodium azide,50% glycerol,pH7.3.
Concentration:	lot specific
Purification:	Affinity purification
Conjugation:	Unconjugated
Storage:	Store at -20°C. Avoid freeze / thaw cycles.
Stability:	Shelf life: one year from despatch.
Predicted Protein Size:	19kDa/23kDa
Gene Name:	RAB5B, member RAS oncogene family
Database Link:	Entrez Gene 5869 Human P61020
Background:	Protein transport. Probably involved in vesicular traffic.
Synonyms:	RAB5B

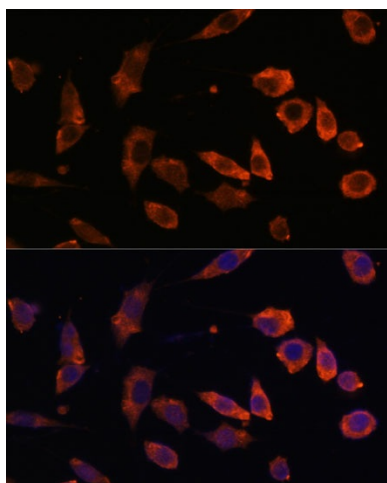


[View online »](#)

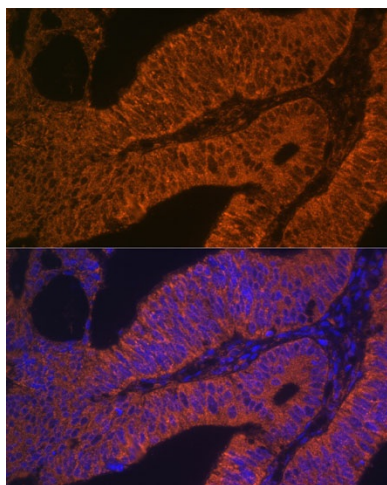
Product images:



Western blot analysis of extracts of various cell lines, using RAB5B antibody ([TA380643]) at 1:1000 dilution. Secondary antibody: HRP Goat Anti-Rabbit IgG (H+L) at 1:10000 dilution. Lysates/proteins: 25ug per lane. Blocking buffer: 3% nonfat dry milk in TBST. Detection: ECL Enhanced Kit. Exposure time: 90s.



Immunofluorescence analysis of L929 cells using RAB5B antibody ([TA380643]) at dilution of 1:100. Blue: DAPI for nuclear staining.



Immunofluorescence analysis of human colon carcinoma using RAB5B antibody ([TA380643]) at dilution of 1:100. Blue: DAPI for nuclear staining.