

Product datasheet for **TA380625S**

RAB31 Rabbit Polyclonal Antibody

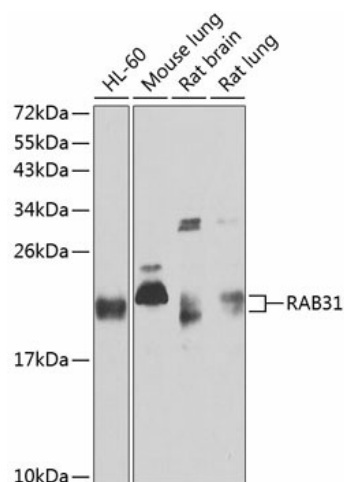
Product data:

Product Type:	Primary Antibodies
Applications:	ELISA, ICC/IF, WB
Recommended Dilution:	WB, 1:200 - 1:2000 IF/ICC, 1:50 - 1:200 ELISA, Recommended starting concentration is 1 µg/mL. Please optimize the concentration based on your specific assay requirements.
Reactivity:	Human, Mouse, Rat
Modifications:	Unmodified
Host:	Rabbit
Isotype:	IgG
Clonality:	Polyclonal
Formulation:	Buffer: PBS with 0.02% sodium azide, 50% glycerol, pH 7.3.
Concentration:	lot specific
Purification:	Affinity purification
Conjugation:	Unconjugated
Storage:	Store at -20°C. Avoid freeze / thaw cycles.
Stability:	Shelf life: one year from despatch.
Predicted Protein Size:	22kDa
Gene Name:	RAB31, member RAS oncogene family
Database Link:	Entrez Gene 11031 Human Q13636
Background:	Enables GDP binding activity and GTP binding activity. Involved in several processes, including Golgi to plasma membrane protein transport; cellular response to insulin stimulus; and receptor internalization. Located in early endosome; phagocytic vesicle; and trans-Golgi network membrane. Biomarker of severe acute respiratory syndrome.
Synonyms:	Rab-22B; Rab22B

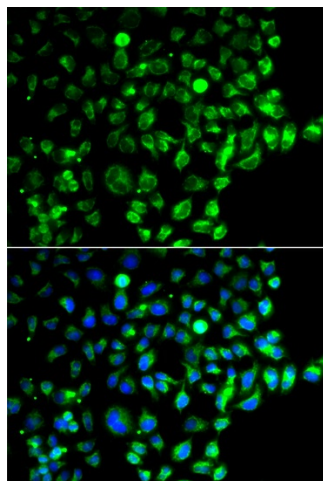


[View online »](#)

Product images:



Western blot analysis of various lysates using RAB31 Rabbit pAb ([TA380625]) at 1:1000 dilution. Secondary antibody: HRP-conjugated Goat anti-Rabbit IgG (H+L) (AS014) at 1:10000 dilution. Lysates/proteins: 25µg per lane. Blocking buffer: 3% nonfat dry milk in TBST. Detection: ECL Basic Kit (RM00020). Exposure time: 30s.



Immunofluorescence analysis of A549 cells using RAB31 Rabbit pAb ([TA380625]). Secondary antibody: Cy3-conjugated Goat anti-Rabbit IgG (H+L) (AS007) at 1:500 dilution. Blue: DAPI for nuclear staining.