

## Product datasheet for **TA380623S**

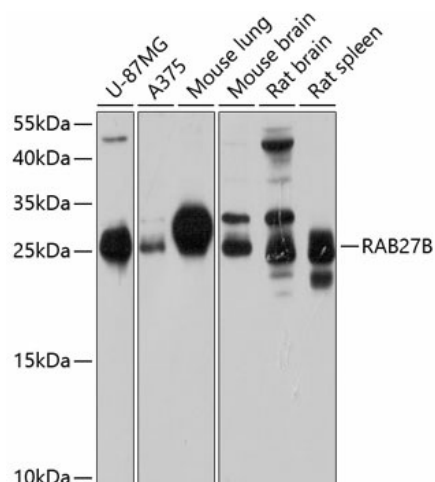
### **RAB27B Rabbit Polyclonal Antibody**

#### **Product data:**

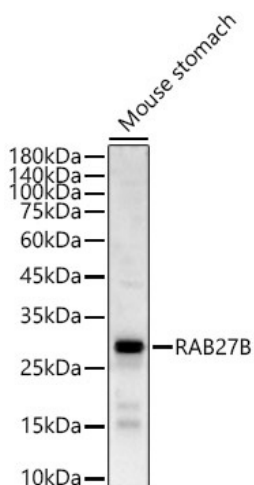
Product Type:	Primary Antibodies
Applications:	ELISA, WB
Recommended Dilution:	WB, 1:500 - 1:1000 ELISA, Recommended starting concentration is 1 µg/mL. Please optimize the concentration based on your specific assay requirements.
Reactivity:	Human, Mouse
Modifications:	Unmodified
Host:	Rabbit
Isotype:	IgG
Clonality:	Polyclonal
Formulation:	Buffer: PBS with 0.02% sodium azide, 50% glycerol, pH 7.3.
Concentration:	lot specific
Purification:	Affinity purification
Conjugation:	Unconjugated
Storage:	Store at -20°C. Avoid freeze / thaw cycles.
Stability:	Shelf life: one year from despatch.
Predicted Protein Size:	25kDa
Gene Name:	RAB27B, member RAS oncogene family
Database Link:	<a href="#">Entrez Gene 5874 Human</a> <a href="#">O00194</a>
Background:	Enables guanyl ribonucleotide binding activity; myosin V binding activity; and protein domain specific binding activity. Involved in multivesicular body sorting pathway and positive regulation of exocytosis. Located in Golgi stack and cytoplasmic vesicle.
Synonyms:	C25KG

[View online »](#)

## Product images:



Western blot analysis of various lysates



Western blot analysis of lysates from Mouse stomach