

## Product datasheet for **TA380616S**

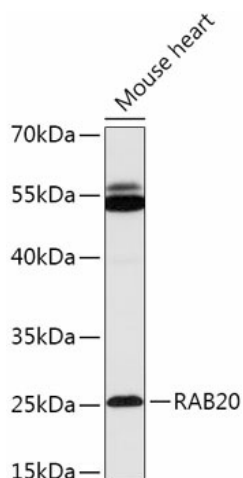
### **RAB20 Rabbit Polyclonal Antibody**

#### **Product data:**

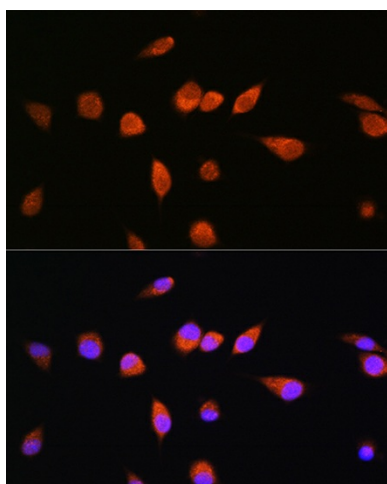
Product Type:	Primary Antibodies
Applications:	ELISA, ICC/IF, WB
Recommended Dilution:	WB, 1:500 - 1:2000 IF/ICC, 1:50 - 1:200 ELISA, Recommended starting concentration is 1 µg/mL. Please optimize the concentration based on your specific assay requirements.
Reactivity:	Mouse
Modifications:	Unmodified
Host:	Rabbit
Isotype:	IgG
Clonality:	Polyclonal
Formulation:	Buffer: PBS with 0.02% sodium azide, 50% glycerol, pH 7.3.
Concentration:	lot specific
Purification:	Affinity purification
Conjugation:	Unconjugated
Storage:	Store at -20°C. Avoid freeze / thaw cycles.
Stability:	Shelf life: one year from despatch.
Predicted Protein Size:	26kDa
Gene Name:	RAB20, member RAS oncogene family
Database Link:	<a href="#">Q9NX57</a>
Background:	Predicted to enable GTPase activity. Involved in phagosome acidification and phagosome-lysosome fusion. Located in Golgi apparatus and phagocytic vesicle.
Synonyms:	FLJ20429



[View online »](#)

**Product images:**


Western blot analysis of lysates from Mouse heart



Immunofluorescence analysis of L929 cells using RAB20 Rabbit pAb ([TA380616]) at dilution of 1:100. Secondary antibody: Cy3-conjugated Goat anti-Rabbit IgG (H+L) (AS007) at 1:500 dilution. Blue: DAPI for nuclear staining.