

Product datasheet for **TA380607S**

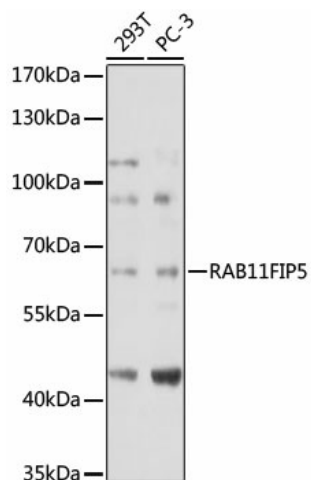
RAB11FIP5 Rabbit Polyclonal Antibody

Product data:

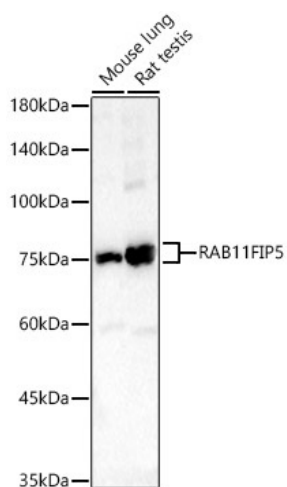
Product Type:	Primary Antibodies
Applications:	ELISA, ICC/IF, WB
Recommended Dilution:	WB, 1:500 - 1:1000 IF/ICC, 1:50 - 1:200 ELISA, Recommended starting concentration is 1 µg/mL. Please optimize the concentration based on your specific assay requirements.
Reactivity:	Human, Mouse, Rat
Modifications:	Unmodified
Host:	Rabbit
Isotype:	IgG
Clonality:	Polyclonal
Formulation:	PBS with 0.05% proclin300, 50% glycerol, pH7.3.
Concentration:	lot specific
Purification:	Affinity purification
Conjugation:	Unconjugated
Storage:	Store at -20°C. Avoid freeze / thaw cycles.
Stability:	Shelf life: one year from despatch.
Predicted Protein Size:	70kDa
Gene Name:	RAB11 family interacting protein 5
Database Link:	Entrez Gene 26056 Human Q9BXF6
Background:	Enables gamma-tubulin binding activity. Involved in cellular response to acidic pH; negative regulation of adiponectin secretion; and regulation of protein localization to cell surface. Located in centriolar satellite and mitochondrial outer membrane.
Synonyms:	DKFZp434H018; Gaf-1; GAF1; KIAA0857; pp75; Rab11-FIP5; RIP11



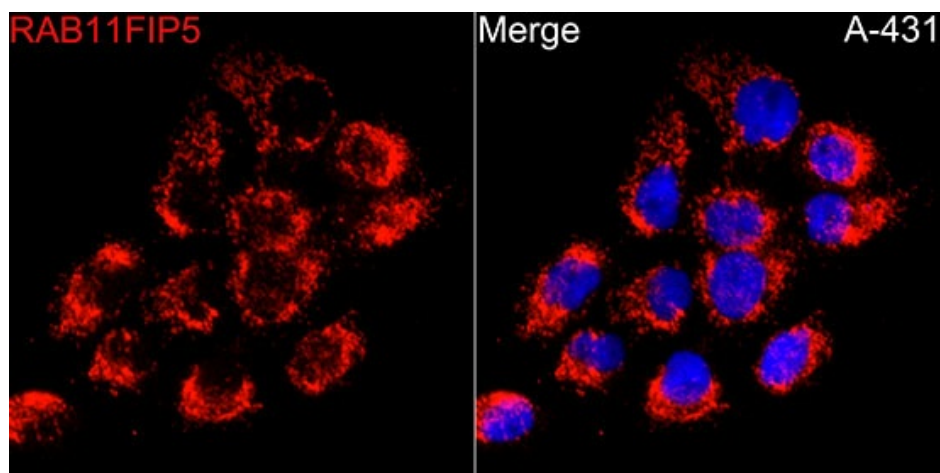
[View online »](#)

Product images:


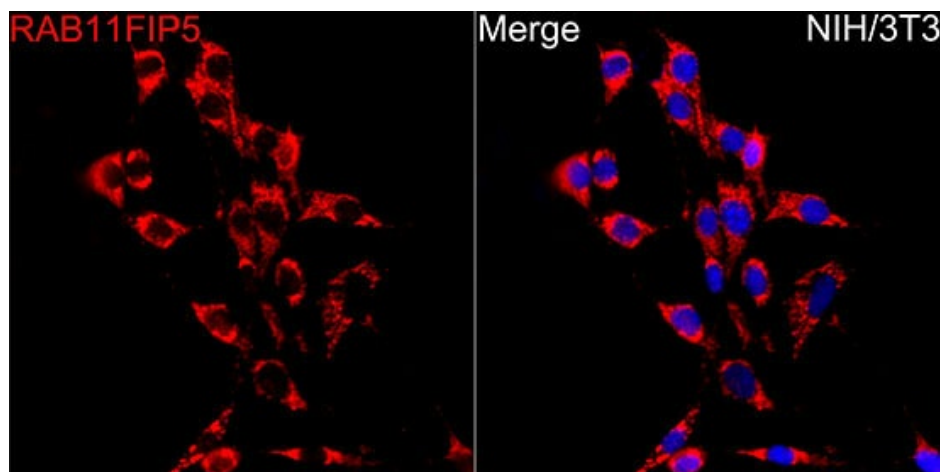
Western blot analysis of various lysates



Western blot analysis of various lysates



Immunofluorescence analysis of A-431 cells using RAB11FIP5 Rabbit pAb ([TA380607]) at dilution of 1:50 (40x lens). Secondary antibody: Cy3-conjugated Goat anti-Rabbit IgG (H+L) (AS007) at 1:500 dilution. Blue: DAPI for nuclear staining.



Immunofluorescence analysis of NIH/3T3 cells using RAB11FIP5 Rabbit pAb ([TA380607]) at dilution of 1:50 (40x lens). Secondary antibody: Cy3-conjugated Goat anti-Rabbit IgG (H+L) (AS007) at 1:500 dilution. Blue: DAPI for nuclear staining.