

Product datasheet for **TA380593S**

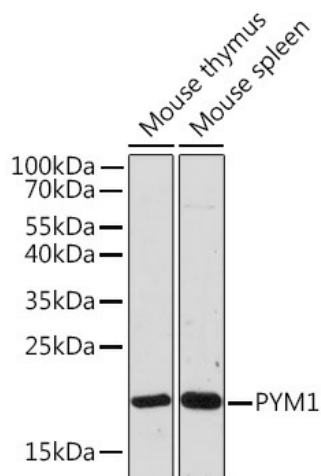
WIBG (PYM1) Rabbit Polyclonal Antibody

Product data:

Product Type:	Primary Antibodies
Applications:	ELISA, ICC/IF, WB
Recommended Dilution:	WB, 1:500 - 1:2000 IF/ICC, 1:50 - 1:200 ELISA, Recommended starting concentration is 1 µg/mL. Please optimize the concentration based on your specific assay requirements.
Reactivity:	Human, Mouse, Rat
Host:	Rabbit
Isotype:	IgG
Clonality:	Polyclonal
Formulation:	Buffer: PBS with 0.02% sodium azide, 50% glycerol, pH 7.3.
Concentration:	lot specific
Purification:	Affinity purification
Conjugation:	Unconjugated
Storage:	Store at -20°C. Avoid freeze / thaw cycles.
Stability:	Shelf life: one year from despatch.
Predicted Protein Size:	23kDa
Gene Name:	PYM homolog 1, exon junction complex associated factor
Database Link:	Entrez Gene 84305 Human Q9BRP8
Background:	Enables ribosome binding activity. Involved in exon-exon junction complex disassembly; nuclear-transcribed mRNA catabolic process, nonsense-mediated decay; and positive regulation of translation. Located in cell junction; cytosol; and nuclear lumen. Part of exon-exon junction complex.



[View online »](#)

Product images:


Western blot analysis of various lysates using PYM1 Rabbit pAb ([TA380593]) at 1:1000 dilution. Secondary antibody: HRP-conjugated Goat anti-Rabbit IgG (H+L) at 1:10000 dilution. Lysates/proteins: 25µg per lane. Blocking buffer: 3% nonfat dry milk in TBST. Detection: ECL Enhanced Kit . Exposure time: 90s.