

## Product datasheet for TA380588S

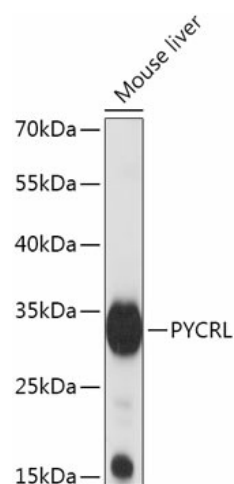
### PYCR3 Rabbit Polyclonal Antibody

#### Product data:

Product Type:	Primary Antibodies
Applications:	ELISA, WB
Recommended Dilution:	WB, 1:500 - 1:2000 ELISA, Recommended starting concentration is 1 µg/mL. Please optimize the concentration based on your specific assay requirements.
Reactivity:	Mouse
Modifications:	Unmodified
Host:	Rabbit
Isotype:	IgG
Clonality:	Polyclonal
Formulation:	Buffer: PBS with 0.02% sodium azide, 50% glycerol, pH 7.3.
Concentration:	lot specific
Purification:	Affinity purification
Conjugation:	Unconjugated
Storage:	Store at -20°C. Avoid freeze / thaw cycles.
Stability:	Shelf life: one year from despatch.
Predicted Protein Size:	29kDa
Gene Name:	pyrroline-5-carboxylate reductase-like
Database Link:	<a href="#">Q53H96</a>
Background:	This gene encodes a protein that belongs to the pyrroline-5-carboxylate reductase family of enzymes. Members of this family catalyze the final step in proline biosynthesis, converting pyrroline-5-carboxylate to proline. Glutamate and ornithine are precursors in the synthesis of proline. The protein encoded by this gene is a cytoplasmic enzyme involved in the biosynthesis of proline from ornithine.
Synonyms:	FLJ13852


[View online »](#)

## Product images:



Western blot analysis of lysates from Mouse liver