

Product datasheet for **TA380584S**

Pycard Rabbit Polyclonal Antibody

Product data:

Product Type:	Primary Antibodies
Applications:	ELISA, IHC, WB
Recommended Dilution:	WB, 1:500 - 1:1000 IHC-P, 1:50 - 1:200 ELISA, Recommended starting concentration is 1 µg/mL. Please optimize the concentration based on your specific assay requirements.
Reactivity:	Human, Mouse, Rat
Modifications:	Unmodified
Host:	Rabbit
Isotype:	IgG
Clonality:	Polyclonal
Formulation:	Buffer: PBS with 0.02% sodium azide, 50% glycerol, pH 7.3.
Concentration:	lot specific
Purification:	Affinity purification
Conjugation:	Unconjugated
Storage:	Store at -20°C. Avoid freeze / thaw cycles.
Stability:	Shelf life: one year from despatch.
Predicted Protein Size:	21kDa
Gene Name:	PYD and CARD domain containing
Database Link:	Entrez Gene 66824 Mouse Q9EPB4

[View online »](#)

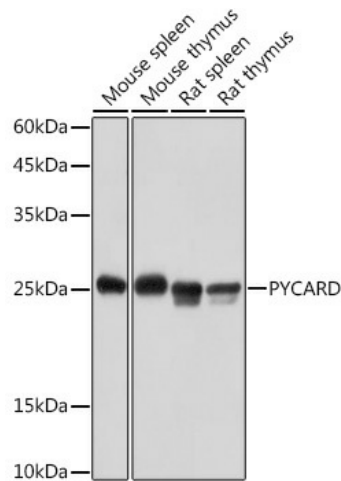
Background:

Enables identical protein binding activity and protein dimerization activity. Involved in several processes, including activation of cysteine-type endopeptidase activity; positive regulation of cytokine production; and regulation of defense response. Acts upstream of or within several processes, including defense response to Gram-positive bacterium; positive regulation of macromolecule metabolic process; and regulation of autophagy. Located in cytosol; extracellular region; and nucleus. Part of inflammasome complex. Is expressed in several structures, including alimentary system; brain; heart; hemolymphoid system gland; and urinary system. Orthologous to human PYCARD (PYD and CARD domain containing).

Synonyms:

ASC; CARD5; hASC; MGC10332; TMS; TMS-1; TMS1

Product images:



Western blot analysis of various lysates using ASC/TMS1 Rabbit pAb ([TA380584]) at 1:1000 dilution.

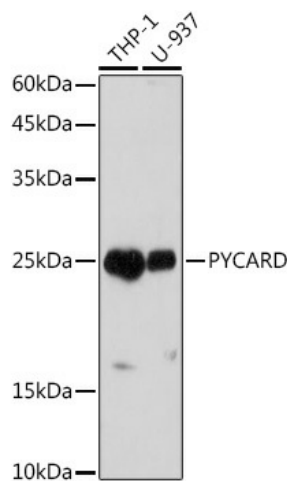
Secondary antibody: HRP-conjugated Goat anti-Rabbit IgG (H+L) (AS014) at 1:10000 dilution.

Lysates/proteins: 25µg per lane.

Blocking buffer: 3% nonfat dry milk in TBST.

Detection: ECL Basic Kit (RM00020).

Exposure time: 10s.



Western blot analysis of various lysates using ASC/TMS1 Rabbit pAb ([TA380584]) at 1:1000 dilution.

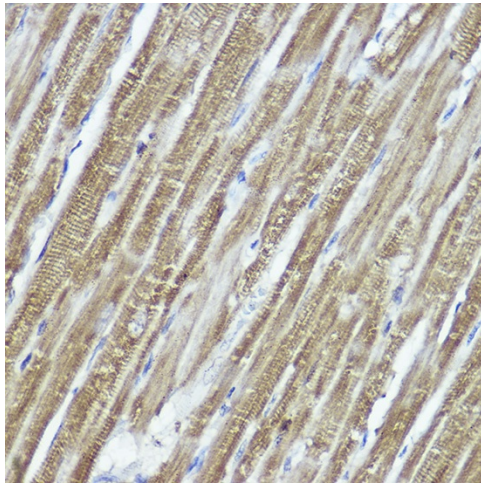
Secondary antibody: HRP-conjugated Goat anti-Rabbit IgG (H+L) (AS014) at 1:10000 dilution.

Lysates/proteins: 25µg per lane.

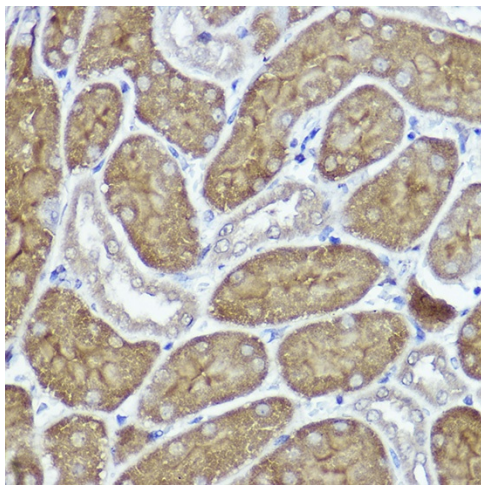
Blocking buffer: 3% nonfat dry milk in TBST.

Detection: ECL Basic Kit (RM00020).

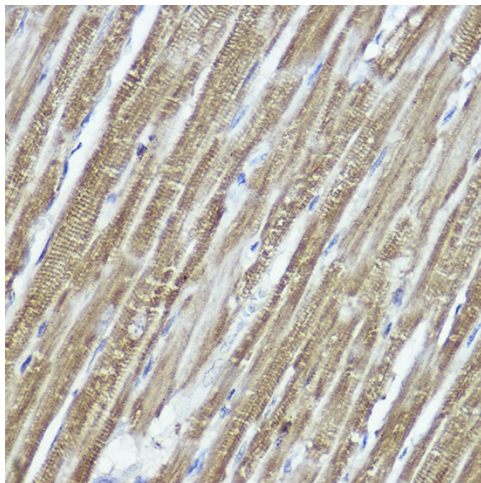
Exposure time: 180s.



Immunohistochemistry analysis of paraffin-embedded Human liver cancer using ASC/TMS1 Rabbit pAb ([TA380584]) at dilution of 1:100 (40x lens). High pressure antigen retrieval performed with 0.01M Citrate Bufferr (pH 6.0) prior to IHC staining.



Immunohistochemistry analysis of paraffin-embedded Mouse kidney using ASC/TMS1 Rabbit pAb ([TA380584]) at dilution of 1:100 (40x lens). High pressure antigen retrieval performed with 0.01M Citrate Bufferr (pH 6.0) prior to IHC staining.



Immunohistochemistry analysis of paraffin-embedded Rat heart using ASC/TMS1 Rabbit pAb ([TA380584]) at dilution of 1:100 (40x lens). High pressure antigen retrieval performed with 0.01M Citrate Bufferr (pH 6.0) prior to IHC staining.