

## Product datasheet for TA380572S

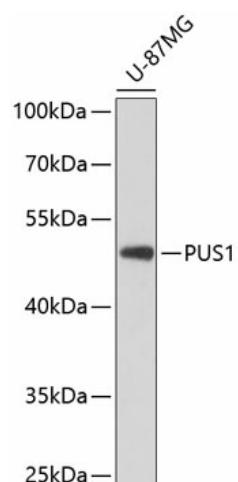
### PUS1 Rabbit Polyclonal Antibody

#### Product data:

Product Type:	Primary Antibodies
Applications:	ELISA, WB
Recommended Dilution:	WB, 1:500 - 1:2000 ELISA, Recommended starting concentration is 1 µg/mL. Please optimize the concentration based on your specific assay requirements.
Reactivity:	Human
Modifications:	Unmodified
Host:	Rabbit
Isotype:	IgG
Clonality:	Polyclonal
Formulation:	Buffer: PBS with 0.02% sodium azide, 50% glycerol, pH 7.3.
Concentration:	lot specific
Purification:	Affinity purification
Conjugation:	Unconjugated
Storage:	Store at -20°C. Avoid freeze / thaw cycles.
Stability:	Shelf life: one year from despatch.
Predicted Protein Size:	47kDa
Gene Name:	pseudouridylate synthase 1
Database Link:	<a href="#">Entrez Gene 80324 Human Q9Y606</a>
Background:	This gene encodes a pseudouridine synthase that converts uridine to pseudouridine once it has been incorporated into an RNA molecule. The encoded enzyme may play an essential role in tRNA function and in stabilizing the secondary and tertiary structure of many RNAs. A mutation in this gene has been linked to mitochondrial myopathy and sideroblastic anemia. Alternate splicing results in multiple transcript variants.
Synonyms:	DOBI; MGC11268


[View online »](#)

## Product images:



Western blot analysis of lysates from U-87MG cells