

## Product datasheet for **TA380541**

### PTP alpha (PTPRA) Rabbit Polyclonal Antibody

#### Product data:

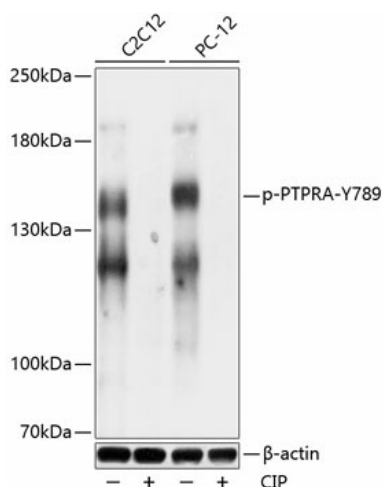
Product Type:	Primary Antibodies
Applications:	WB
Recommended Dilution:	WB,1:500 - 1:2000
Reactivity:	Human, Mouse, Rat
Modifications:	Phospho Y789
Host:	Rabbit
Isotype:	IgG
Clonality:	Polyclonal
Immunogen:	A phospho specific peptide corresponding to residues surrounding Y789 of human PTPRA
Formulation:	Buffer: PBS with 0.02% sodium azide,50% glycerol,pH7.3.
Concentration:	lot specific
Purification:	Affinity purification
Conjugation:	Unconjugated
Storage:	Store at -20°C. Avoid freeze / thaw cycles.
Stability:	Shelf life: one year from despatch.
Predicted Protein Size:	89kDa/90kDa
Gene Name:	protein tyrosine phosphatase, receptor type A
Database Link:	<a href="#">Entrez Gene 5786 Human P18433</a>
Background:	The protein encoded by this gene is a member of the protein tyrosine phosphatase (PTP) family. PTPs are known to be signaling molecules that regulate a variety of cellular processes including cell growth, differentiation, mitotic cycle, and oncogenic transformation. This PTP contains an extracellular domain, a single transmembrane segment and two tandem intracytoplasmic catalytic domains, and thus represents a receptor-type PTP. This PTP has been shown to dephosphorylate and activate Src family tyrosine kinases, and is implicated in the regulation of integrin signaling, cell adhesion and proliferation. Three alternatively spliced variants of this gene, which encode two distinct isoforms, have been reported.



[View online »](#)

**Synonyms:** HEPTP; HLPR; HPTPA; HPTPalpha; LRP; OTTHUMP00000030064; PTPA; PTPase-alpha; PTPRL2; R-PTP-alpha; RPTPA

### Product images:



Western blot analysis of extracts of C2C12 and PC-12 cells, using Phospho-PTPRA-Y789 antibody (TA380541) at 1:1000 dilution. C2C12 cell lysate were treated by CIP (20ul CIP for each 400ul cell lysate) at 37°C for 1 hour .PC-12 cell lysate were treated by CIP (20ul CIP for each 400ul cell lysate) at 37°C for 1 hour .|Secondary antibody: HRP Goat Anti-Rabbit IgG (H+L) at 1:10000 dilution. |Lysates/proteins: 25ug per lane. |Blocking buffer: 3% BSA. |Detection: ECL Basic Kit . |Exposure time: 30s.