

Product datasheet for **TA380538S**

SHP1 (PTPN6) Rabbit Polyclonal Antibody

Product data:

Product Type:	Primary Antibodies
Applications:	WB
Recommended Dilution:	WB,1:500 - 1:2000
Reactivity:	Human, Mouse
Modifications:	Phospho Y564
Host:	Rabbit
Isotype:	IgG
Clonality:	Polyclonal
Immunogen:	A synthetic phosphorylated peptide around Y564 of human PTPN6 (NP_002822.2).
Formulation:	Buffer: PBS with 0.02% sodium azide,50% glycerol,pH7.3.
Concentration:	lot specific
Purification:	Affinity purification
Conjugation:	Unconjugated
Storage:	Store at -20°C. Avoid freeze / thaw cycles.
Stability:	Shelf life: one year from despatch.
Predicted Protein Size:	63kDa/67kDa/70kDa
Gene Name:	protein tyrosine phosphatase, non-receptor type 6
Database Link:	Entrez Gene 5777 Human P29350



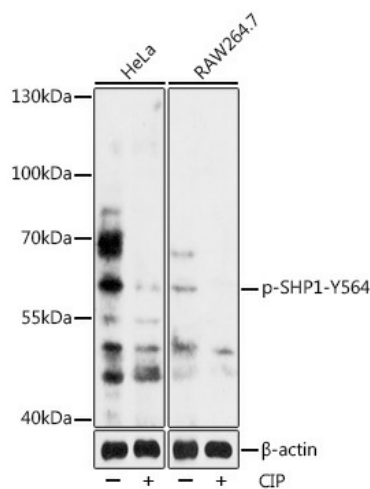
[View online »](#)

Background:

The protein encoded by this gene is a member of the protein tyrosine phosphatase (PTP) family. PTPs are known to be signaling molecules that regulate a variety of cellular processes including cell growth, differentiation, mitotic cycle, and oncogenic transformation. N-terminal part of this PTP contains two tandem Src homolog (SH2) domains, which act as protein phospho-tyrosine binding domains, and mediate the interaction of this PTP with its substrates. This PTP is expressed primarily in hematopoietic cells, and functions as an important regulator of multiple signaling pathways in hematopoietic cells. This PTP has been shown to interact with, and dephosphorylate a wide spectrum of phospho-proteins involved in hematopoietic cell signaling. Multiple alternatively spliced variants of this gene, which encode distinct isoforms, have been reported.

Synonyms:

HCP; HCPH; HPTP1C; PTP-1C; PTP1C; SH-PTP1; SHP-1; SHP-1L; SHP1

Product images:


Western blot analysis of extracts of HeLa and RAW 264.7 cells, using Phospho-SHP1-Y564 antibody ([TA380538]) at 1:2000 dilution. HeLa cell lysates were treated by CIP at 37°C for 1 hour. RAW 264.7 cell lysates were treated by CIP at 37°C for 1 hour. | Secondary antibody: HRP Goat Anti-Rabbit IgG (H+L) at 1:10000 dilution. | Lysates/proteins: 25ug per lane. | Blocking buffer: 3% BSA. | Detection: ECL Enhanced Kit . | Exposure time: 3min.