

Product datasheet for **TA380533**

PTPN22 Rabbit Polyclonal Antibody

Product data:

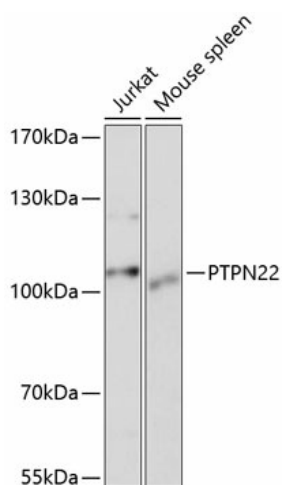
| | |
|-------------------------|---|
| Product Type: | Primary Antibodies |
| Applications: | ICC/IF, WB |
| Recommended Dilution: | WB,1:500 - 1:2000 IF,1:50 - 1:200 |
| Reactivity: | Human, Mouse, Rat |
| Modifications: | Unmodified |
| Host: | Rabbit |
| Isotype: | IgG |
| Clonality: | Polyclonal |
| Immunogen: | Recombinant fusion protein containing a sequence corresponding to amino acids 1-90 of human PTPN22 (NP_036543.4). |
| Formulation: | Buffer: PBS with 0.02% sodium azide,50% glycerol,pH7.3. |
| Concentration: | lot specific |
| Purification: | Affinity purification |
| Conjugation: | Unconjugated |
| Storage: | Store at -20°C. Avoid freeze / thaw cycles. |
| Stability: | Shelf life: one year from despatch. |
| Predicted Protein Size: | 20kDa/75kDa/78kDa/85kDa/88kDa/91kDa |
| Gene Name: | protein tyrosine phosphatase, non-receptor type 22 |
| Database Link: | Entrez Gene 26191 Human Q9Y2R2 |
| Background: | This gene encodes of member of the non-receptor class 4 subfamily of the protein-tyrosine phosphatase family. The encoded protein is a lymphoid-specific intracellular phosphatase that associates with the molecular adapter protein CBL and may be involved in regulating CBL function in the T-cell receptor signaling pathway. Mutations in this gene may be associated with a range of autoimmune disorders including Type 1 Diabetes, rheumatoid arthritis, systemic lupus erythematosus and Graves' disease. Alternatively spliced transcript variants encoding distinct isoforms have been described. |



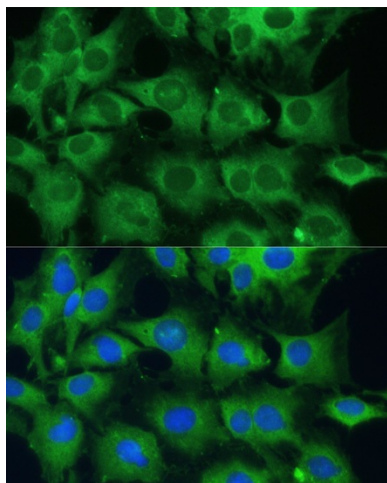
[View online »](#)

Synonyms: LYP; LYP1; LYP2; PEP; PTPN8

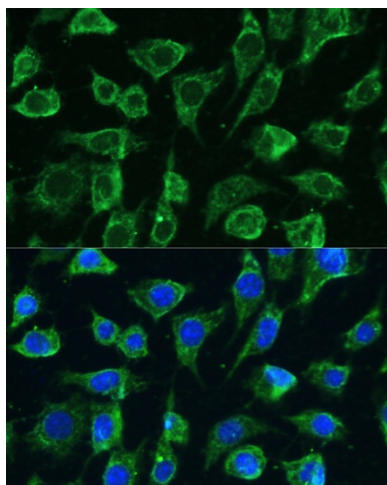
Product images:



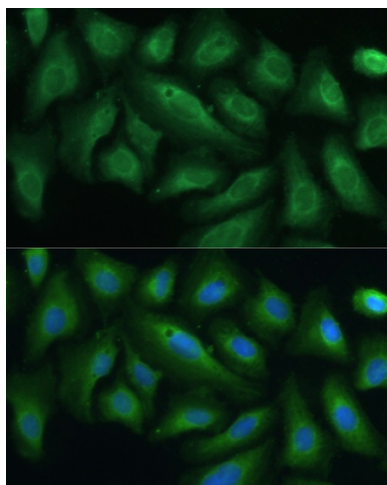
Western blot analysis of extracts of various cell lines, using PTPN22 antibody (TA380533) at 1:1000 dilution. | Secondary antibody: HRP Goat Anti-Rabbit IgG (H+L) at 1:10000 dilution. | Lysates/proteins: 25ug per lane. | Blocking buffer: 3% nonfat dry milk in TBST. | Detection: ECL Basic Kit . | Exposure time: 5s.



Immunofluorescence analysis of C6 cells using PTPN22 antibody (TA380533) at dilution of 1:100. Blue: DAPI for nuclear staining.



Immunofluorescence analysis of L-929 cells using PTPN22 antibody (TA380533) at dilution of 1:100. Blue: DAPI for nuclear staining.



Immunofluorescence analysis of U-2 OS cells using PTPN22 antibody (TA380533) at dilution of 1:100. Blue: DAPI for nuclear staining.