

Product datasheet for **TA380528S**

SHP2 (PTPN11) Rabbit Polyclonal Antibody

Product data:

Product Type:	Primary Antibodies
Applications:	ELISA, ICC/IF, IP, WB
Recommended Dilution:	WB, 1:500 - 1:2000 IF/ICC, 1:50 - 1:200 IP, 0.5µg-4µg antibody for 200µg-400µg extracts of whole cells ELISA, Recommended starting concentration is 1 µg/mL. Please optimize the concentration based on your specific assay requirements.
Reactivity:	Human, Mouse, Rat
Modifications:	Unmodified
Host:	Rabbit
Isotype:	IgG
Clonality:	Polyclonal
Formulation:	PBS with 0.09% Sodium azide, 50% glycerol, pH7.3.
Concentration:	lot specific
Purification:	Affinity purification
Conjugation:	Unconjugated
Storage:	Store at -20°C. Avoid freeze / thaw cycles.
Stability:	Shelf life: one year from despatch.
Predicted Protein Size:	68kDa
Gene Name:	protein tyrosine phosphatase, non-receptor type 11
Database Link:	Entrez Gene 5781 Human Q06124



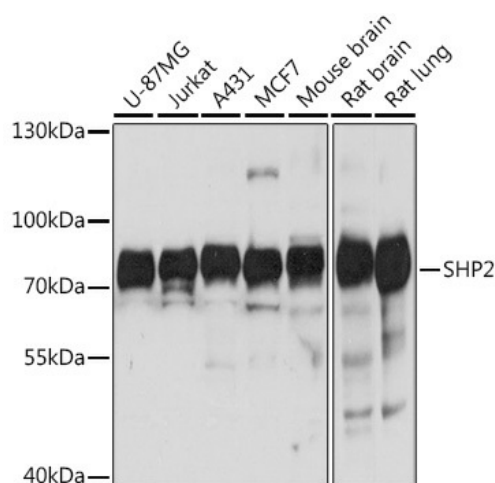
[View online »](#)

Background:

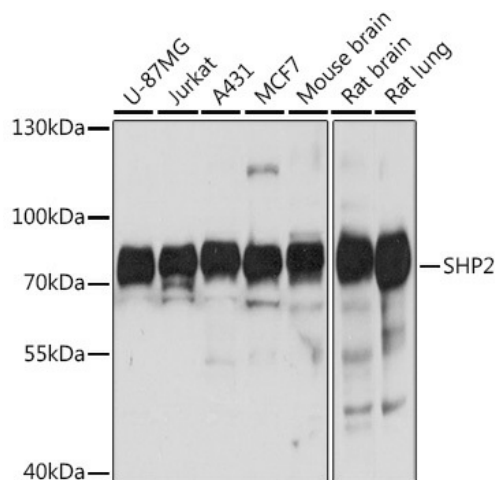
The protein encoded by this gene is a member of the protein tyrosine phosphatase (PTP) family. PTPs are known to be signaling molecules that regulate a variety of cellular processes including cell growth, differentiation, mitotic cycle, and oncogenic transformation. This PTP contains two tandem Src homology-2 domains, which function as phospho-tyrosine binding domains and mediate the interaction of this PTP with its substrates. This PTP is widely expressed in most tissues and plays a regulatory role in various cell signaling events that are important for a diversity of cell functions, such as mitogenic activation, metabolic control, transcription regulation, and cell migration. Mutations in this gene are a cause of Noonan syndrome as well as acute myeloid leukemia.

Synonyms:

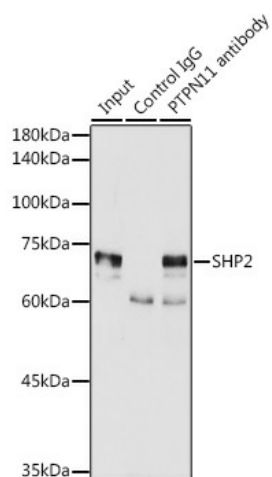
BPTP3; CFC; MGC14433; NS1; PTP-1D; PTP-2C; PTP2C; SH-PTP2; SH-PTP3; SHP-2; SHP2; SHPTP2

Product images:


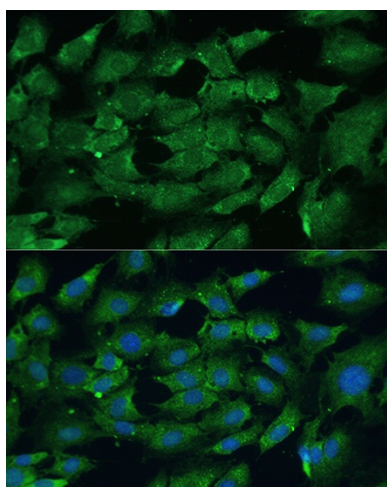
Western blot analysis of lysates from wild type (WT) and SHP2 knockout (KO) 293T cells



Western blot analysis of various lysates using [KO Validated] SHP2 Rabbit pAb ([TA380528]) at 1:1000 dilution.
Secondary antibody: HRP-conjugated Goat anti-Rabbit IgG (H+L) (AS014) at 1:10000 dilution.
Lysates/proteins: 25µg per lane.
Blocking buffer: 3% nonfat dry milk in TBST.
Detection: ECL Basic Kit (RM00020).
Exposure time: 3s.



Immunoprecipitation analysis of 300 µg extracts of MCF7 cells using 3 µg SHP2 antibody ([TA380528]). Western blot was performed from the immunoprecipitate using SHP2 antibody ([TA380528]) at a dilution of 1:2000.



Immunofluorescence analysis of C6 cells using [KO Validated] SHP2 Rabbit pAb ([TA380528]) at dilution of 1:100. Blue: DAPI for nuclear staining.